



FISU
WORLD
UNIVERSITY
CHAMPIONSHIP
CANOE SPORTS

BULLETIN 2

- 17.08.2024 -

GENERAL INFORMATION

001		002		003		004	
CITY ↓		DATE ↓		EDITION ↓		COUNTRY ↓	
<hr/> <i>Montemor-o-Velho (Portugal) is the 2024 World University Championship Canoe Sports host city.</i>		<hr/> <i>The competition is scheduled for: 21-24 August 2024</i>		<hr/> <i>This will be the 16th World University Championship held in Portugal.</i>		<hr/> <i>Language: Portuguese Currency: Euro Population: 10,31 millions Dial code: + 351</i>	

HOST CITY

MONTEMOR-O-VELHO



Dominating the valley where the Mondego River runs, with endless rice fields, the town of Montemor-o-Velho is characterized by its imposing castle, the main fortress of Low Mondego during Medieval times.

Located in central Portugal, the municipality of Montemor-o-Velho belongs to the district of Coimbra. With a total area of 229km² it is part of Baixo Mondego, a privileged region for tourist destinations with great cultural, historical, scenic, sporting and social value. Its bordering municipalities are Cantanhede to the North, Soure to the South, Condeixa-a-Nova and Coimbra (25km) to the East and Figueira da Foz (16km) to the West.

Located on the plateau of Lower Mondego River in the council of Montemor-o-Velho, between Figueira da Foz and Coimbra, is a 233-ha wetland, divided in two different areas: a swampy area and an involving agricultural area.

SPORT PROGRAM

DAY -2

SUNDAY, 18/08 15:00-22:00

ARRIVALS

Canoe Sprint - Official training session

DAY -1

MONDAY, 19/08 09:00-22:00

ARRIVALS

Canoe Sprint - Official training session

DAY 0

TUESDAY, 20/08 09:30-20:00

Canoe Sprint - Official training session

Official Start System testing

Canoe Sprint - GTM

Opening Ceremony

DAY 1

WEDNESDAY, 21/08 09:30-19:00

Canoe Sprint (200m | 5000m) - Heats / SF / F

DAY 2

THURSDAY, 22/08 09:30-17:30

Canoe Sprint (1000M) - Heats / SF / F

Marathon - Official Training

DAY 3

FRIDAY, 23/08 09:30-16:30

Canoe Sprint (500M) - Heats / SF

Marathon - Official training session

Marathon - GTM

DAY 4

SATURDAY, 24/08 09:30-19:30

Canoe Sprint (500M) - Finals

Marathon - Competition day

Closing Ceremony

DAY 5

SUNDAY, 25/08 All Morning

Departures

VENUE ACCESS AND SECURITY

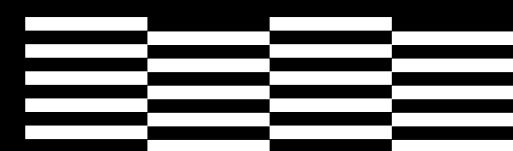


VENUE ACCESS AND SECURITY



CANOE SPRINT

SPRINT

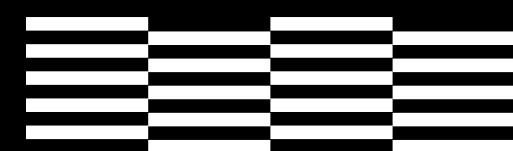


MEN



- C1 200m, 500m, 1000m, 5000m
- C2 200m, 500m
- K1 200m, 500m, 1000m, 5000m
- K2 200m, 500m, 1000m
- K4 500m

SPRINT

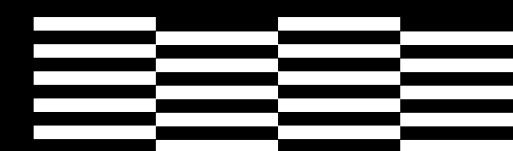


WOMEN



- C1 200m, 500m, 5000m
- C2 200m, 500m
- K1 200m, 500m, 1000m, 5000m
- K2 200m, 500m, 1000m
- K4 500m

SPRINT



MIX



- C2 500m
- K2 500m

- *One distance per day*
- *30 min gap between same gender + type races. Example K1 500 Men & K2 500 Men.*
- *[Timetable here.](#)*
- *Start lists by country are available on the website.*
- *If you find some mistake, please let us know as soon as possible.*
- *Boats Stickers will be provided by the OC*

CANOE SPRINT

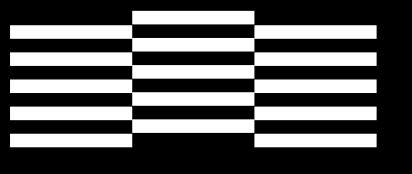


CANOE SPRINT



2 big laps at 1000m + 1 small lap at 500m

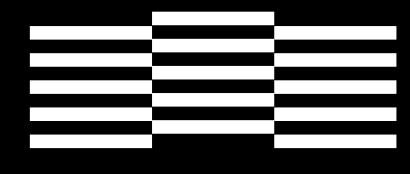
CANOE MARATHON

MARATHON 

MEN

↓

- K1 MEN
- C1 MEN

MARATHON 

WOMEN

↓

- K1 WOMEN
- C1 WOMEN

- *One Race per category. Depending on the entries, we might group K1 Men and Women and C1 Men and Women, with gap starts*
- *20km for K1 Men & 16km for K1 Women. 16km for C1 Men & 12km for C1 Women*
- *Small portage with feeding and non feeding lane*
- *[Timetable here.](#)*
- *A minor change was made in the map with the introduction of a new buoy and a warm up area.*
- *Boats Stickers will be provided by the OC.*

CANOE MARATHON



CANOE MARATHON B



REGISTRATIONS AND FEES

All registrations are made online through the FISU OAS

Only the athletes who comply with the following conditions may take part in a FISU World University Championship:

- Be a national of the country they represent;
- Be at least 18 and no older than 25 years of age on the 31st December of the year of the event. For 2024, athletes must be born between the 01/01/1999 and the 31/12/2006.

To do the accreditation you need the IDCARD or Passport for each participant (athletes and officials).
Be sure that all finances are in order.

No payments allow onsite. With the payment not done, participation won't be possible.

FEES

■ **Registration Fee**
20€ per person to be paid to FISU

■ **Participation Fee**
80€ per person & night to be paid to OC

■ **Advance Payment**
25% of the participation fee based in the Quantitative Entry Form for 6 days

19th May 2024

■ **Participation fee full payment**
Based in the info of arrival and departure dates

19th July 2024

BANK ACCOUNT INFORMATION

■ **Bank Name:**
Caixa Geral de Depósitos

■ **Address:**
Av. João XXI, 63, 1000-300 Lisboa

IBAN:PT50 0035 0824 00010557930 93
BIC/SWIFT: CGDIPTPL

■ **Holder**

FADU – Federação Académica do Desporto
Universitário

■ **Address**
Av. Prof. Egas Moniz – EUL – Pav 1
1600-190 Lisboa Portugal

VISA INFORMATION



Third-country nationals are required to hold a long stay visa to enter and stay in Portugal for over 90 days.

- European Union Member State citizen;
- State party to the European Economic Area Agreement, or a third-countries with whom the EU has signed freedom of movement agreements;
- Family members of portuguese citizens or foreign nationals included above.

VISA INFO

TRANSPORTATION

■ ARRIVING IN PORTUGAL

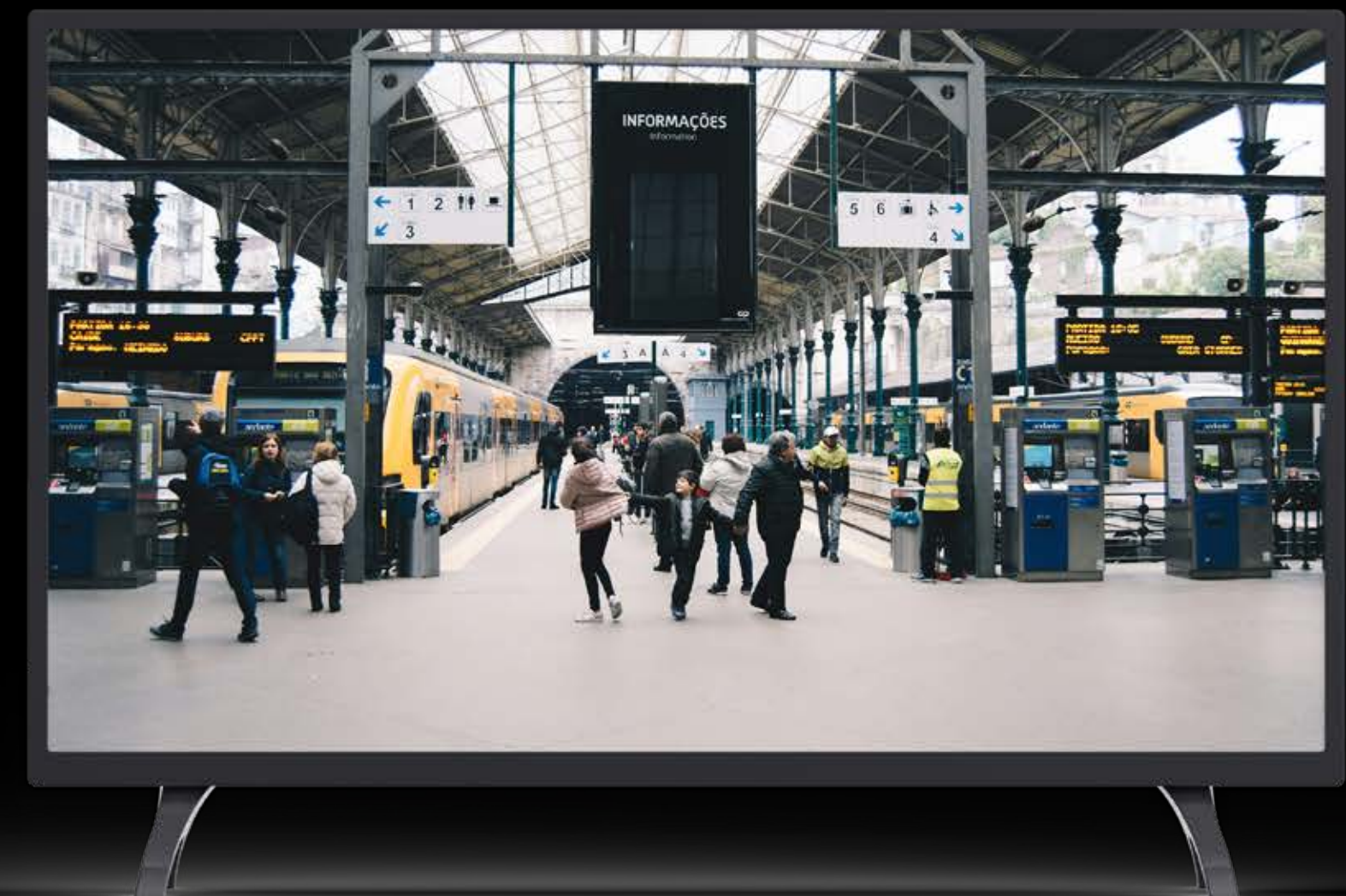
- Coimbra has no airport. Porto International Airport (OPO) will be the main arriving point in Portugal and transfer will be provided by the OC
- Teams can also travel to Lisbon International Airport and take the train (1:30 minutes – [Tickets here](#)) to Coimbra, and the OC will pick them up.
- For the ones coming by plane:
 - When you go through the Security doors (after the Luggage pick up), go to your left. You should see some volunteers with the sign of the event. They will take you to the transfer. Keep in mind that probably you might need to wait for other countries to arrive. Waiting time won't be more than 90 minutes.
 - If you arrive with the Accreditation open, you will be taken to the Accreditation Center in the Sport Venue to do the accreditation.
 - If you arrive after closing hours, you will go directly to the accommodation and you will do the accreditation first thing in the morning (see previous chapter)
- For the ones coming by car
 - meeting point is always the Accreditation Center to do the accreditation. So, be sure to arrive on the hours that you indicated in the Travel Plan in the FISU OAS.

■ SHUTTLE SERVICES

- Transport will be provided by a shuttle service that will be implemented depending on the number of participants and in a way that allows athletes to participate in the event without problems.

Shuttle bus schedule will be provided until the end of the week.

SHUTTLE SCHEDULES AVAILABLE HERE

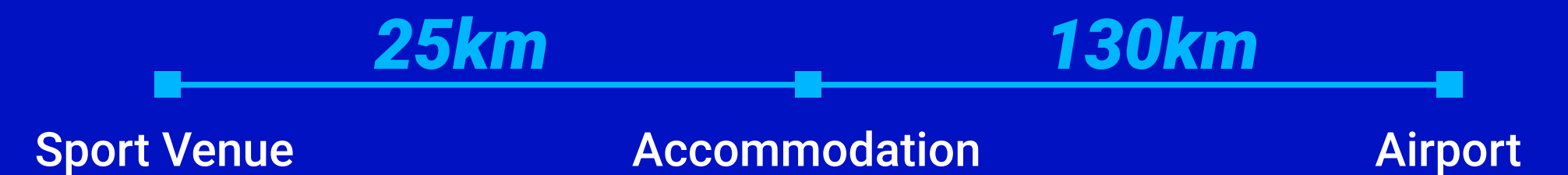


ACCOMMODATION

Participants will be accommodated in the Students Residences of the University of Coimbra (30 minutes by bus). For the Heads of Delegations single rooms will be provided, all other participants will stay in double rooms. All residences have Internet access by wi-fi.

- University Residence Pólo II-2
- University Residence Pólo II-1

DISTANCE



Please consult the Reservation, Access, and Cancellation policy for the accommodation"

[MORE INFO](#)





CATERING

BREAKFAST

■ Food Complex Polo II
(07:30 to 09:30)

- capacity of 464 seats for breakfast

LUNCH

■ Track
(12:30 to 14:00)

- Lunch to be provided in lunch box and to be served (soup, warm dish, fruit and water)

DINNER

■ Food Complex Polo II
(19:00 to 21:00)

MENU

For the countries that informed us of food allergies or restrictions please take note:

- at breakfast all food will be label;
- at lunch time, each of the persons identified will have a meal box with his/her name – ask for it to the volunteers;
- at dinner all food will be label;

IMPORTANT: on the departure day, for the Countries that will leave before the working hours of Breakfast, meal box will be provide on the dinner of the 24th – be sure to pick yours

MEDICAL SERVICES AND DOPING CONTROL

Medical care and doping control testing will be provided according to the FISU Medical regulations and FISU Minimum requirements and the Portuguese law.

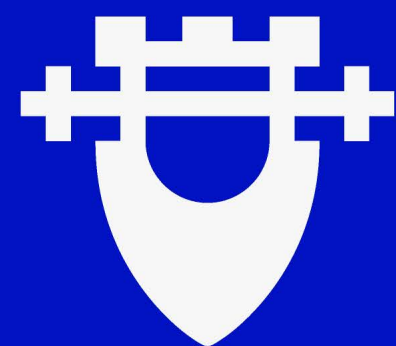
In the website you can consult the medical plan for the event. Dr. Vasco will be available along with the Physiotherapist Tiago to help you in anything that you might need.

Firefighters will be present with boats to rescue anyone that might need. Also, ambulances will be present. The OC will also have a doctor present and at least 1 physiotherapist during all competition. Closest hospital is in Coimbra (25km).



All issues related to the doping control will be managed by ADoP the Portuguese antidoping agency. The laboratory to be used is the Catalanian Anti-Doping Laboratory located in Barcelona (Spain), that has WADA Certification.

MEDICAL PLAN



MONTEMOR-O-VELHO 2024

FISU
WORLD
UNIVERSITY
CHAMPIONSHIP
CANOE SPORTS

ORGANISING COMMITTEE CHART



RICARDO NORA
OC President



MARCO OLIVEIRA
OC Event Manager | FADU



MARCOS OLIVEIRA
OC Competition Manager | FPC



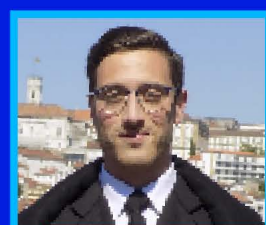
RÚBEN PEREIRA
OC Financial Department | FADU



PEDRO PINHO
OC Media & Communication | FADU



VASCO COUCEIRO
OC Medical & Antidoping



DIOGO LOPES
OC Delegation Services



RUI MENDES
Head Of Timing and Scoring



RICARDO RODRIGUES
Head of Results Manager | FADU



VASCO CAVALEIRO
Venue Manager | CMMV



ARMÉNIO COELHO
OC Protocol & Cerimonies | FADU



MARCO OLIVEIRA
Head Of Registrations | FADU



FÁBIO PIMENTEL
Head Of Accomodation



DIOGO BRAZ
OC Transportation | FADU



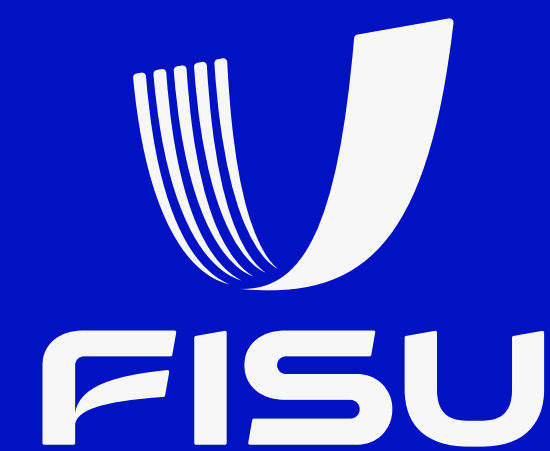
DAVID CALAXA
OC Volunteers



ANDRÉ MARTINS
OC Catering



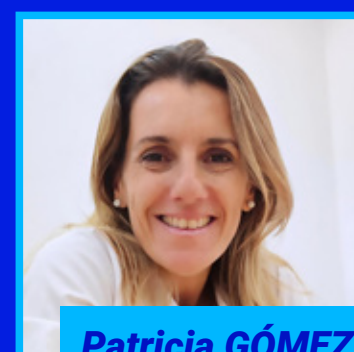
FISU
WORLD
UNIVERSITY
CHAMPIONSHIP
CANOE SPORTS



Marko ZUNIC (CRO)
FISU EC member



Karl TEREPIING (EST)
FISU CIC member



Patricia GÓMEZ (ARG)
FISU CMI member



Zeljko RAJKOVIC (SRB)
FISU TCC



Stien VERLINDEN (BEL)
FISU EC member



Paulo SIVIERI (BRA)
FISU Championships & World Cups



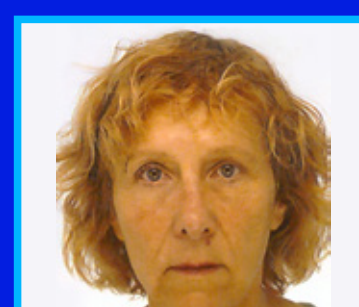
FISU
WORLD
UNIVERSITY
CHAMPIONSHIP
CANOE SPORTS



ITO



Stien VERLINDEN (BEL)
Chief Official



Colette IRIGOYEN (FRA)
International Technical Official



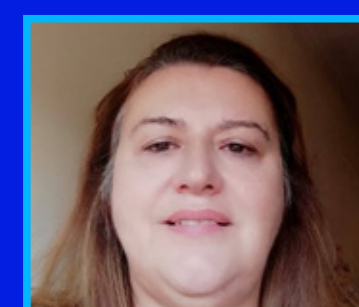
Delia MERAYO (ESP)
International Technical Official



Óscar SOARES (POR)
International Technical Official



Uwe STEINHÄUSER (GER)
International Technical Official



Rosa TEIXEIRA (POR)
International Technical Official

REGISTERED COUNTRIES



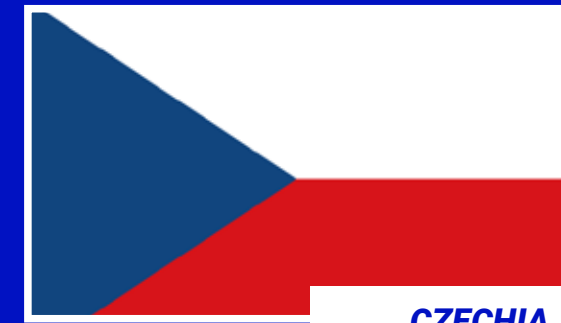
ARGENTINA



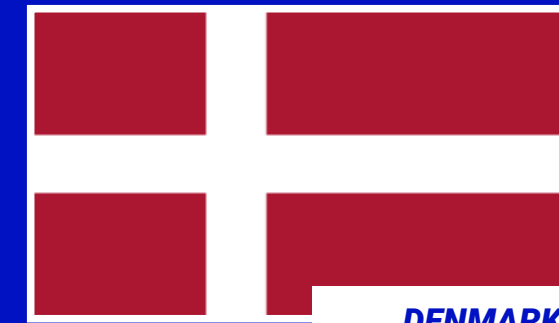
BELGIUM



CHINA



CZECHIA



DENMARK



ESTONIA



GEORGIA



GERMANY



HONG KONG, CHINA



HUNGARY



ITALY



JAPAN



LATVIA



LITHUANIA



NETHERLANDS



POLAND



PORTUGAL



SINGAPORE



SLOVAKIA



SPAIN



SWITZERLAND



CHINESE TAIPEI



UNITED KINGDOM OF GREAT BRITAIN
AND NORTHERN IRELAND



UNITED STATES OF AMERICA

INFORMATION AND MEDIA

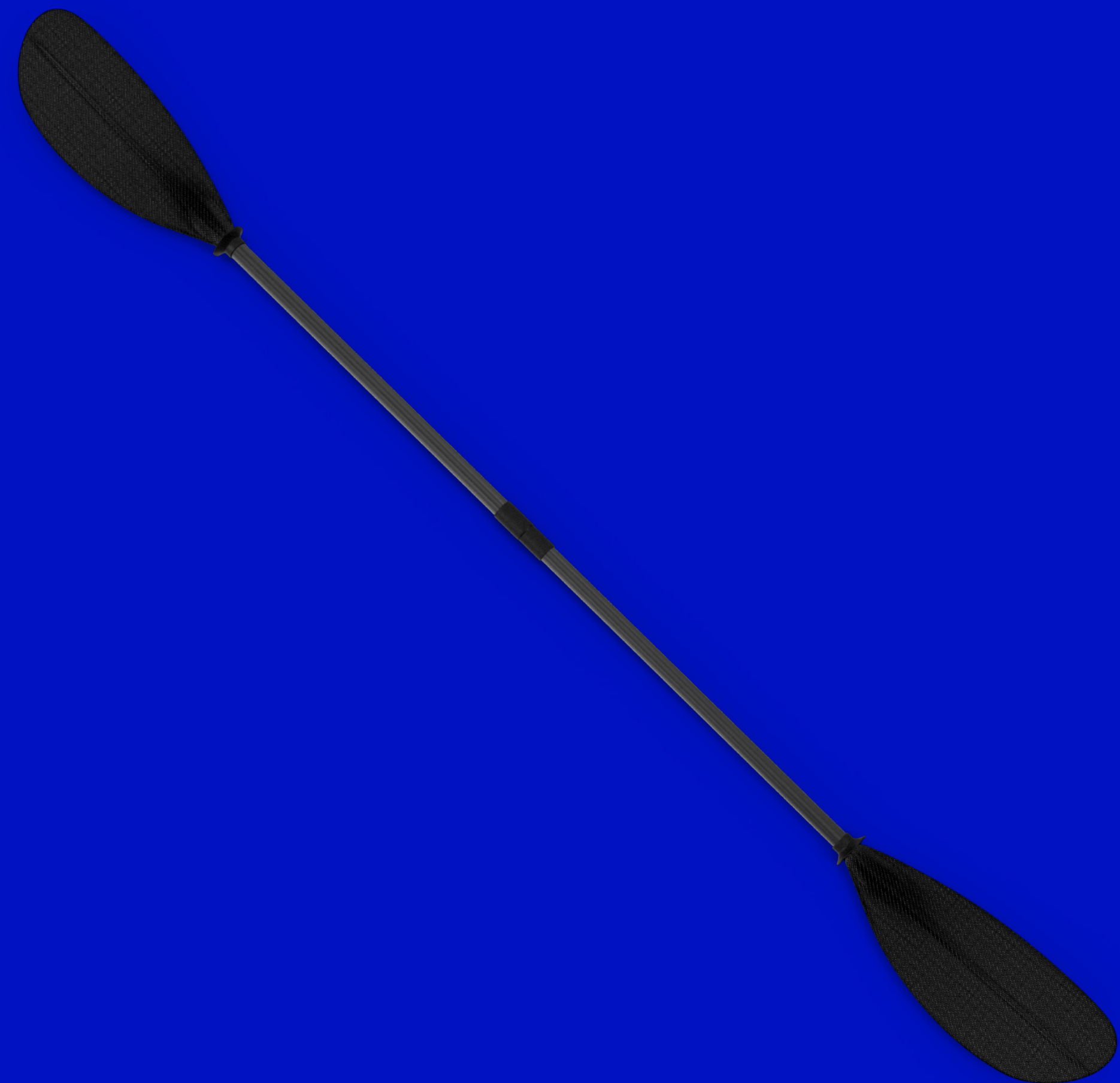
The official website will found at canoesports2024.fisu-events.com, there you can find updated news and information about event.

Facebook:

2024 FISU World University Championship Canoe Sports
(@FISUCanoeSports)

Instagram:

FISU 2024 Canoe Sports
(@fisucanoesports)



MARCO OLIVEIRA
Event Manager

EMAIL
fisu.canoesports2024@fadu.pt

CONTACT
+351 910 250 041

CONTACTS

**JOIN OUR
GROUP CHAT**
What's App

JOIN HERE
