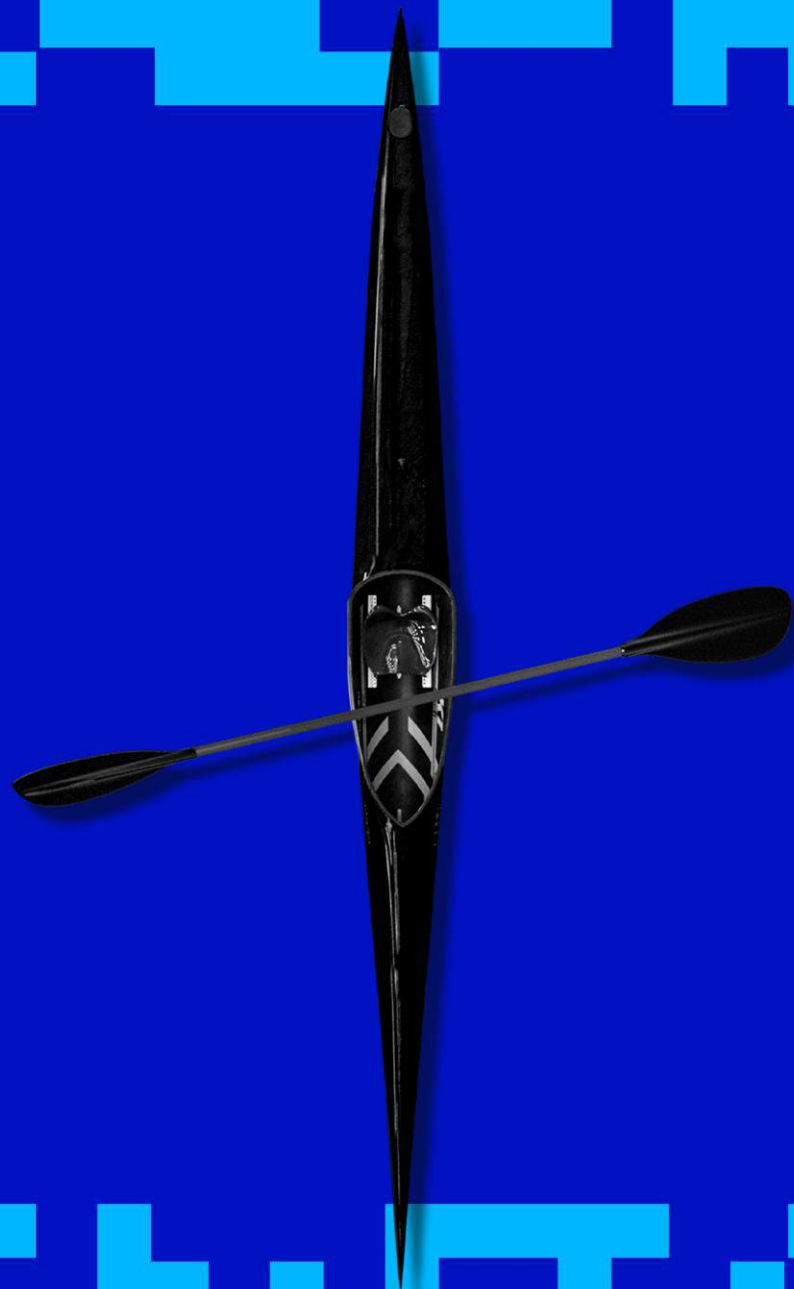





**FISU**  
WORLD  
UNIVERSITY  
CHAMPIONSHIP  
CANOE SPORTS



**General Technical  
Meeting**  
Montemor-o-Velho 2024



**COMPETITION**

ID control

**ID control will close 10 minutes before the start of each race. All competitors must be on the water by this time.**

**Warming up ONLY in side chanel**

**Boat numbers will be provided at ID Control**

**Numbers should be returned after each race.**

# START LINE

Pontoon boat holders

Boats must line up in number order

Numbers from left to right (lowest on left)

Boats must back up so the tail is touching the pontoon.

Pay attention to the instructions from the aligners and the starter

The start signal will be “ready-go”

A second warning will result in a 30 second penalty

# Number of laps

As shown for each class in the competition schedule

- 3 laps 1 portage (C1 WOMEN)
- 4 laps 2 portages (C1 MEN, K1 WOMEN)
- 5 laps 3 portages (K1 MEN)

(no bridge!)



All turns are as on course map

- TP 1 is clockwise
- Bridge is anti-clockwise-- -> clockwise
- First lap no portage
- Start pontoon must be passed on the left
- Portage buoy can be ignored during first lap
- Second, third, fourth lap: portage buoy must be taken anti-clockwise

After required number of portages one lap to finish





TRACKED BY GARMIN



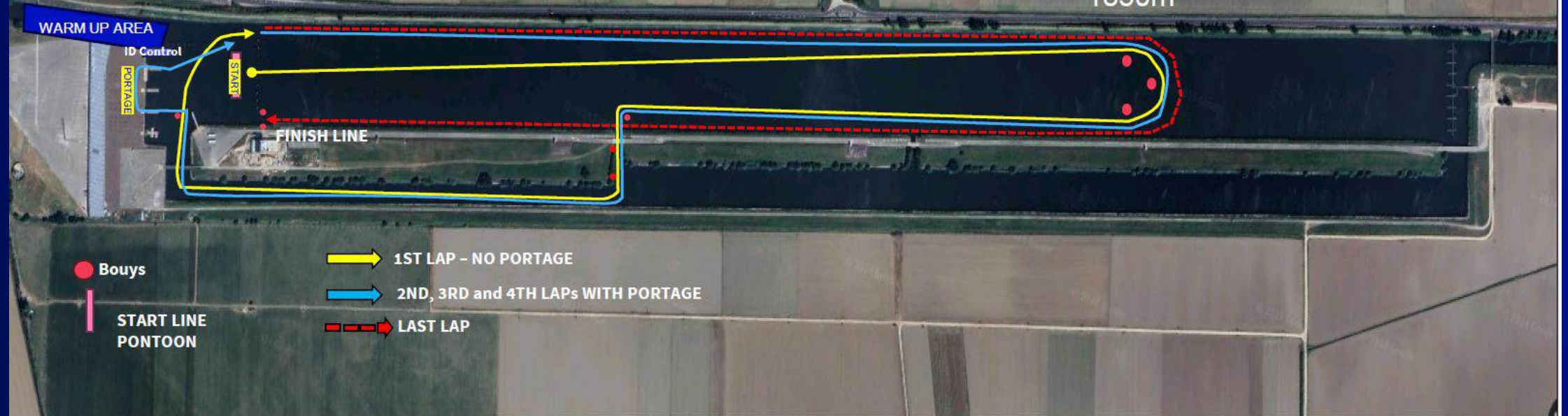
# Canoe Marathon

K1 Men - 20km ( 5 Laps 3 portages)

K1 Women & C1 Men - 16km ( 4 laps, 2 portages)

C1 Women- 12km ( 3 laps, 1 Portage)

1850m



## **Support lane on the left of the portage**

- The support lane is around 3 metres wide and about 35 metres long.
- The team helpers must respect each other and the athletes during feeding.
- No feeding outside of the support lane
- No support over the divider between running and feeding lanes
- One way only in the support lane
- Access from the supporters lane only with bib

# Boat control after the race

MARATHON WEIGHTS ARE ALLOWED!!

- There will be a boat control for the first 4 boats immediately after each race.
- Boat control is to the right after the finish
- No boat control – no result
- The boat will be emptied of water and all loose items will be removed before weighing

## PENALTIES – LONG DISTANCE

- A Yellow flag will be displayed in the beginning of the portage area when a penalty has been imposed.

- There is a digital screen at the beginning of the portage indicating which boat number has been given a penalty and the length of the penalty.

- It is the paddlers responsibility to check the penalty board.

The penalised competitor will be required to stop in the penalty box for the designated period

