



**2026**

# **FISU World University Championship Combat Sports**

Brasília | Brazil  
8-13 June 2026

BULLETIN 01





Inaugurated on the 21<sup>st</sup> of April, 1960, by then president Juscelino Kubitschek, Brasília formally became the third capital of Brazil, after Salvador and Rio de Janeiro. Seen from above, the main area of the city resembles the shape of an airplane. Commonly referred to as the “Federal Capital” or “BSB”, it has been a UNESCO World Heritage Site since 1987. Its modern architectural lines, drawn by the renowned architect Oscar Niemeyer, and the bold urbanization designed by Lucio Costa make Brasília a must for those who want to get to know a unique and vibrant city in the heart of Brazil.

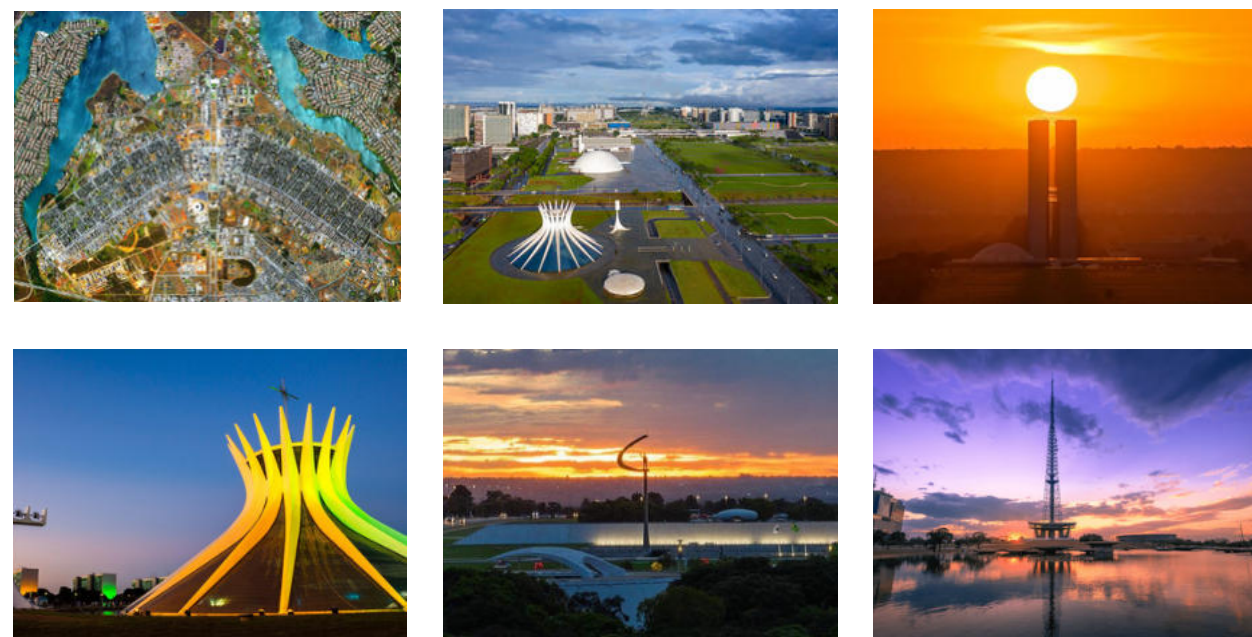
Brasília, the capital of Brazil, experiences mild and dry weather in June, with average temperatures ranging from 13°C to 25°C. This period falls in the heart of the dry season, offering cool mornings, sunny days, and low humidity — excellent conditions for sporting events.

## The Host City



## The Country

Brazil is a country of continental dimensions located in South America, with its capital in Brasilia. It has an enormous diversity of landscapes, economies and cultures. The tropical climate prevails in much of the country, bringing a vibrant and contagious atmosphere.



## The Event

The Brasília 2026 FISU World University Championship Combat Sports will be an opportunity for university athletes from different continents to connect and exchange experiences in a collaborative and competitive environment. Being held in Brasília, Brazil, the expectation is to welcome all participants in this vibrant event.





## Accommodation & Catering

A catering service will be provided to all accredited participants during the event with meals served in a buffet service style, following a set schedule and will include breakfast, lunch, and dinner.

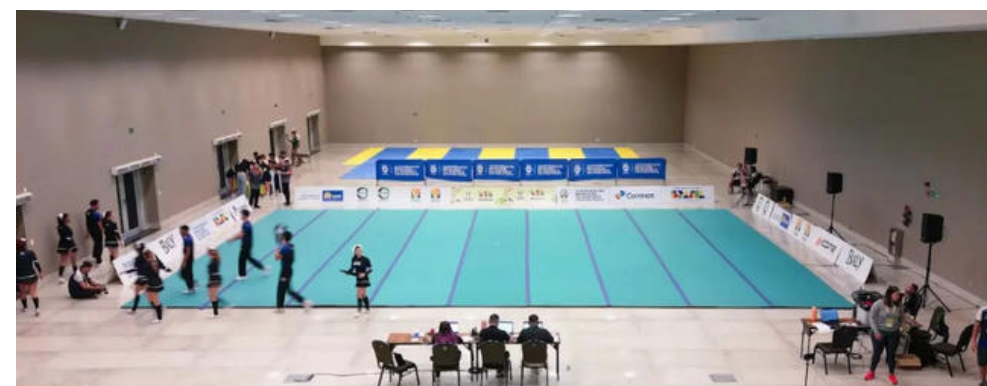
Vegetarian options or meals adapted to specific dietary needs can be arranged upon request.

Please notify [wucombat2026@gmail.com](mailto:wucombat2026@gmail.com) in advance regarding any allergies or dietary restrictions.



## CICB Complex

The largest convention center in Latin America, CICB has the technology and modernity that provides endless possibilities to every event held at its infrastructure. A unique space in Brazil with sophistication and sustainability with over 65,000 m<sup>2</sup> of built area, distributed across five floors, the complex will hold all



## Competition Venue



## CICB Hospitality

All participants of the Brasília 2026 FISU World University Championship Combat Sports will be accommodated at the CICB Hospitality.

Located inside the CICB complex and within a walking distance from training and competition areas, the CICB Hospitality is a hotel that provides a large number of Single and Double rooms and services such as laundry and gym.

# Policy of Entry Permits and Visas

The visa is the document granted by Consular Representations of Brazil abroad that allows the expectation of admission and stay of foreigners in the Brazilian national territory, provided that the conditions established by law have been met.



## Visa application

If a letter of invitation is required, please contact the Organizing Committee through [wuccombat2026@gmail.com](mailto:wuccombat2026@gmail.com) for the necessary support.

## Instructions on Entry to Brazil

For further information regarding entry into Brazil, please contact the Brazilian Representations abroad.

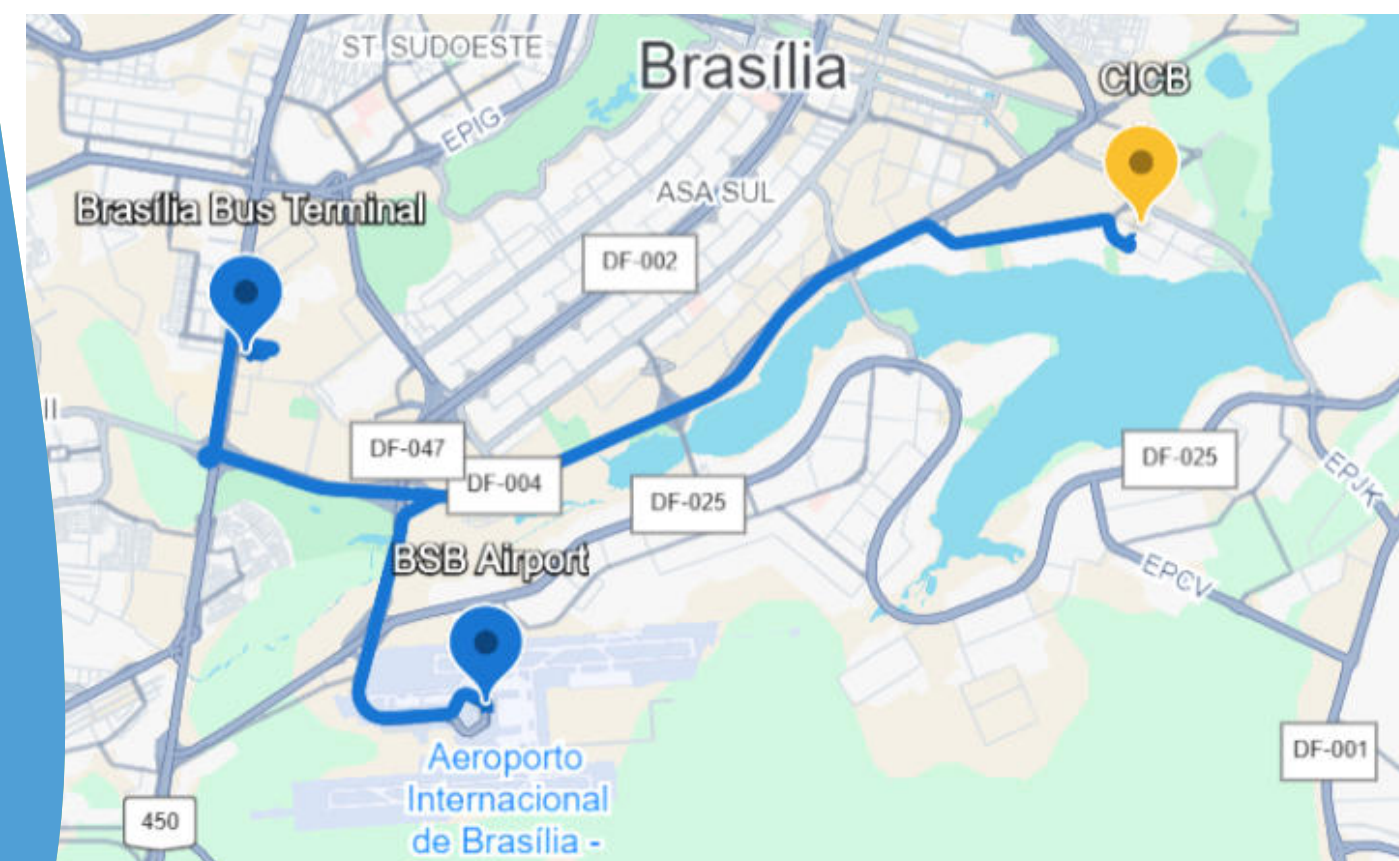
## Visa-exempt countries/regions

For more information on issuing a visa to enter Brazil, please consult the General Visa Regime Chart.

# Official Entry Points

The Official Entry Points for the Brasilia 2026 FISU World University Championship Combat Sports will be the Brasilia International Airport (BSB) and the Brasilia Bus Terminal. Shuttle Service will be provided by the Organizing Committee from/to these points. Any teams deciding to arrive from a different location, should arrange by themselves their transportation towards Brasília.

Upon arrival, identified personnel with event signage will be present to greet delegations and provide assistance.



## Transportation

Efficient transportation will be provided for all accredited participants throughout the event. This includes airport transfers, daily shuttle services, and information on available routes and parking. Please refer to the external links below for detailed information and real-time updates from each service provider.

## Distances from OC

**Competition Venue:** Inside CICB Complex

**Accommodation:** Inside CICB Complex

**BSB Airport:** 15 km (Approx. 15 min)

**Bus Terminal:** 16 km (Approx. 20 min)



FISU CHAMPIONSHIP

## Parking at CICB

Paid parking lots are available inside the CICB complex.



# FISU Registration fees

Effective member associations of FISU: 20 EUR per athlete and official "with all membership fees payment in order";

Other associations: 40 EUR per athlete and official.

FISU registration fees will be charged to the NUSF at the end of the Championships season. An invoice per event will be created. Each Head of delegation must sign the invoice related to the participation at the event. By signing this invoice, the Head of Delegation confirm the number of participants of the concerned delegation and acknowledge the receipt of this invoice.

# Travel costs

The delegations shall be responsible for their own cost of travel to the official point of entry of the Championship and return. The designated airport or other entry point must be approved by the FISU Championships Department.

# Participation fees and registration conditions

The competing countries shall pay a participation fee of **80 EUR per night and per person** to the Organising Committee.

## a) Deposit payment (50%):

NUSFs must pay to the Organising Committee three months before a prepayment of **50% of the participation fees** for each athlete and official registered. The OC will use the submitted Quantitative Entry forms as reference.

## b) Complete payment of the participation fees balance:

NUSFs shall pay to the OC, ideally by bank transfer before their arrival to the event, the **full amount of their participation fee**. The amount will be calculated based on the delegation composition submitted in the Quantitative Entry, and considering the travel information shared by the delegation. If this information is unavailable, the Organising Committee can use by default the arrival two days before the first competition day and departure one day after the last competition day. The deposits already paid will be deducted and considered as part of the final settlement of the participation fees.



# Entry Regulations

Only the athletes who comply with the following conditions may take part in Brasilia 2026 FISU World University Championship Combat Games:

- a) Be a national of the country they represent;
  
- b) Be at least 18 and no older than 25 years of age on the 31st December of the year of the event; for 2026, athletes must be born between the 01/01/2001 and the 31/12/2008.

# Registration Procedures

All Registration procedures must be conducted only through the NUSF.

To find the official contact information from your country's NUSF, [\*\*click here!\*\*](#)

To register, [\*\*click here!\*\*](#)

STAGE	DEADLINE
<b>GENERAL ENTRY FORM</b>	<b>17/01/2026</b>
<b>QUANTITATIVE ENTRY FORM</b>	<b>08/03/2026</b>
<b>INDIVIDUAL ENTRY FORM</b>	<b>08/05/2026</b>

# Delegations Composition

EVENTS	MAX. NUMBER OF ATHLETES		TOTAL ATHLETES PER DELEGATION	OFFICIALS PER DELEGATION	
	MEN	WOMEN			
<b>JU-JITSU</b>	Max. 1 athlete per category	Max. 1 athlete per category	28 Athletes (14 men & 14 women)	Max. 5 officials per delegation	
<b>KARATE</b>	KUMITE - INDIVIDUAL	Max. 1 athlete per category	Max. 29 athletes (16 men & 13 women)	1 athlete - Max. 1 official 2 to 5 athletes - Max. 2 officials 6 to 15 athletes - Max. 3 officials 16 to 29 athletes - Max. 4 officials	
	KUMITE - TEAM	Max. 7 athletes			Max. 4 athletes
	KATA - INDIVIDUAL	Max. 1 athlete			Max. 1 athlete
	KATA - TEAM	Max. 4 athletes			Max. 4 athletes
<b>MUAYTHAI</b>	COMBAT WEIGHT CATEGORIES	Max. 1 athlete per category	Max. 16 athletes (8 men & 8 women) & 1 Team (Duo)	1 athlete - Max. 1 official 2 to 5 athletes - Max. 2 officials 6 to 10 athletes - Max. 3 officials 10 to 14 athletes - Max. 4 officials	
	CULTURAL INDIVIDUAL CATEGORIES	Max. 1 athlete for WK			Max. 1 athlete for WK
	CULTURAL TEAM EVENT	Max. 1 team (either Men, Women or Mixed) per delegation			
<b>WRESTLING</b>	GRECO-ROMAN (men only)	Max. 1 athlete per category	Max. 30 athletes (20 men & 10 women)	1 athlete - Max. 1 official 2 to 5 athletes - Max. 2 officials 6 to 15 athletes - Max. 3 officials 16 to 30 athletes - Max. 4 officials	
	FREE STYLE (Men & Women)	Max. 1 athlete per category			Max. 1 athlete per category
<b>WUSHU</b>	TAOLU (ROUTINES)	Max. 1 athlete per routine	Max. 8 athletes (4 men & 4 women)	1 to 2 athletes - Max. 1 official 3 to 7 athletes - Max. 2 officials 8 to 13 athletes - Max. 3 officials 14 to 18 athletes - Max. 4 officials	
	SANDA (FREE FIGHTING)	Max. 1 athlete per category	Max. 10 athletes (5 men & 5 women)		



FISU  
WORLD  
UNIVERSITY  
CHAMPIONSHIP  
COMBAT SPORTS

# Medical Services

All competition venues will be equipped with ambulances and medical staff present at all times.

Designated Hospitals:

Name of Hospital	Distance from Accommodation	Specialties
Hospital de Base	7,3 Km	Urgency, Emergency and High complexity (Trauma, cardiology, neurology and otorhinolaryngology)
Hospital Regional da Asa Norte - HRAN	9,7 Km	Urgency and emergency (General Surgery, Medical Clinic, Dentistry, Gynecology and Ophthalmology)
Hospital de Apoio de Brasília	14,0 Km	Medical Clinic

# Emergency

In case of an emergency situation, please dial the number below according to the necessity:

Police: **190**

SAMU (Emergency First-Aid Service): **192**

Firefighters: **193**

# Doping Control

During the event, doping testing will be carried out in accordance with the relevant regulations of FISU on doping control.

# Health Insurance

All participating delegations must have the appropriate insurance to cover travel and medical coverage in the championship, as they are not the responsibility of the Organising Committee nor FISU.

For the FISU World University Championships, this obligation will begin from three days before the first competition day until one day after the closing ceremony.

All participants must have valid travel medical insurance, covering:

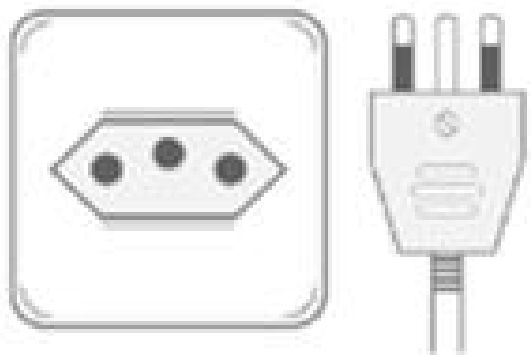
- 24/7 Emergency Assistance
- Emergency Medical Expenses
- Medical Evacuation/Repatriation
- Trip Cancellation/Interruption
- Accidental Death or Injury

The OC is solely responsible for providing first aid, emergency medical care, and transportation to the designated hospital. All other medical costs shall be borne by the participant's insurance.

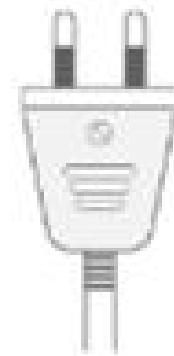
# Electrical Voltage and Power Outlets

In Brasília, the standard electrical voltage is 220 volts and the frequency is 60 hertz. Power outlets typically use the Type N plug, which has three round pins. However, Type C plugs (with two round pins) are also commonly compatible. Participants are advised to check their equipment's voltage and bring appropriate plug adapters or voltage converters if necessary. Adapters can also be found in local convenience stores and electronics shops.

## Type N



## Type C



# Currency Exchange

The only currently accepted currency in Brazil is the Brazilian Real (BRL). You can find it in banks and foreign currency exchange shops worldwide.

Payment with credit cards in commercial establishments can be used in Brasília.

# Time Zone

The official Time Zone in Brasília is UTC/GMT -3.

# Competition Schedule

	5-Jun FRI	6-Jun SAT	7-Jun SUN	8-Jun MON	9-Jun TUE	10-Jun WED	11-Jun THU	12-Jun FRI	13-Jun SAT	14-Jun SUN
<b>OPENING CEREMONY</b>				OPENING CEREMONY						
<b>HEAD OF DELEGATION MEETING</b>			HoD							
<b>JU-JITSU</b>			A	A	TM	C	C	C	C	D
<b>KARATE</b>	A	A	TM	C	C	C	C	D		
<b>MUAYTHAI</b>	A	A	TM	C	C	C	C	C	C	D
<b>WRESTLING</b>	A	A	TM	C	C	C	C	C	D	
<b>WUSHU</b>			A	A	TM	C	C	C	C	D
<b>CLOSING CEREMONY</b>									CLOSING CEREMONY	

LEGEND: A - ARRIVAL | TM - TECHNICAL MEETING | C - COMPETITION | D - DEPARTURE



**FISU**  
WORLD  
UNIVERSITY  
CHAMPIONSHIP  
COMBAT SPORTS

We look forward to  
*welcoming*  
you in Brasilia!

[wuccombat2026@gmail.com](mailto:wuccombat2026@gmail.com)



[combatsports2026.fisu.net](http://combatsports2026.fisu.net)



[fisucombatsports](https://www.instagram.com/fisu.combatsports)



[FISUCombatSports](https://www.facebook.com/FISUCombatSports)