



GOTHENBURG
2026

FISU
WORLD
UNIVERSITY
CHAMPIONSHIP
CHEERLEADING

5 – 7 June 2026

Bulletin 3

Welcome to Gothenburg

Dear student-athletes, dear friends,

I am delighted to welcome you to Gothenburg, for the 2026 FISU World University Championship Cheerleading.

I would like to address you first, dear student-athletes, who are and who always be the beating heart of FISU.

Competing at the World University Championships is a career highlight for many of you. For others, it is a step up to the next level of performance. What you all have in common is your love of sport, your commitment, your fair play and your respect. You come together as rivals, from different places and different backgrounds, but you will almost certainly leave as friends.

Despite the challenging times we are all facing, you remind us of the special power of young people to reassure us that a better world is possible. You remind us of the need to prioritise sport, sustainability, inclusivity and healthy social exchange. FISU firmly believes that university athletes are the role models and future leaders the world needs.

Over the following four days, you will compete alongside some of the best student-athletes on the planet. The FISU World University Championships demand skill, athleticism, and single-minded determination to do your best. But beyond the competition, FISU urges you to have fun. May you return home with memories that will last a lifetime!

None of FISU's events would be possible without the generosity of our hosts. I want to extend our sincere gratitude to the Swedish University Sports Federation and the Swedish Cheerleading Federation for their dedication, and the volunteers for their passion.

FISU is also grateful for the ongoing support of the International Sports Federations. Together, we aim to provide the highest level of technical excellence on and off the field of play.

I am confident that the 2026 FISU World University Championship Cheerleading in Gothenburg will give you every opportunity to shine, to interact and to grow as people.

I wish you the best of luck!

Leonz Eder
FISU President



Leonz Eder
FISU President



FISU
WORLD
UNIVERSITY
CHAMPIONSHIP
CHEERLEADING

General info



Host city for the 2026 FISU
World University Championships
Cheerleading, 5.-7.6.2026, is
Gothenburg, Sweden



Currency: Swedish krona (SEK) – please note that
payment methods are predominantly cashless in
Sweden

Time zone: UTC +1 (CET); UTC +2 (CEST during
summer)



GOTHENBURG
2026

FISU
WORLD
UNIVERSITY
CHAMPIONSHIP
CHEERLEADING

Host country: Sweden



Population: 10,529,000

Capital City: Stockholm

Electricity:

Power sockets – Type C/F

Standard voltage – 230 V

Frequency – 50 Hz

Time zone: UTC +1 (CET); UTC +2 (CEST during summer)

Calling code: +46

Emergency number: 112 (police, ambulance, fire – available 24/7, English-speaking operators)

Average temperatures in June:

Average daytime temperature: 18–22°C

Average nighttime temperature: 10–14°C

Daylight: Up to 18–20 hours of light, especially in southern Sweden

Weather: Generally mild and pleasant with occasional rain showers



GOTHENBURG
2026

FISU
WORLD
UNIVERSITY
CHAMPIONSHIP
CHEERLEADING

Host city: Gothenburg

Welcome to Gothenburg – the proud host city of the 2026 FISU World University Championship Cheerleading!

Known for its coastal charm, innovative and sustainable spirit, and warm hospitality, Gothenburg is the perfect stage for the world's top university athletes to come together. As Sweden's second-largest city, it offers the perfect mix of tradition and modernity – from scenic archipelagos to lively city streets and world-class venues.

With a strong local cheerleading community, commitment to youth sports, and a reputation for hosting major international events, Gothenburg promises a championship experience to remember. Whether you're competing, coaching, or cheering from the stands – prepare for inspiration, excitement, and a touch of Scandinavian magic.

See you in Gothenburg!



Swedish culture

During your stay in Gothenburg, this is a perfect opportunity to get to know Swedish culture! We highly recommend that everyone experience at least one Fika – a classic Swedish coffee break with a pastry.

Also, take time to visit the beautiful Göteborgs skärgård (the Gothenburg archipelago) and enjoy the seaside. Make sure to try some local dishes, such as Svenska köttbullar – the Swedish meatballs with lingonberries or a Skagen – a classic shrimp sandwich.

If you are staying longer, do as the Swedes do and try a Swedish Bastu – which is the Swedish word for sauna!

We are also celebrating our Nationaldag – the Swedish National Day during the Championships - on Saturday the 6th of June. Across the country, people raise the Swedish flag and some wear traditional folk costumes. In the city, you can join various celebrations with music, traditional games, and festivities throughout the day.

To really get into the championship mood, we recommend listening to some famous Swedish artists such as ABBA, Avicii, First Aid Kit, Swedish House Mafia, and Zara Larsson just to mention a few.



Useful Swedish Phrases



Official language: Swedish

Hello! → Hej!

Good luck! → Lycka till!

Bye bye! → Hej då!

Thank you! → Tack!

Yes / No → Ja/Nej

Excuse me → Ursäkta

I want a cinnamon roll → Jag vill ha en kanelbulle.



GOTHENBURG
2026

FISU
WORLD
UNIVERSITY
CHAMPIONSHIP
CHEERLEADING

Organizers

On behalf of the International University Sports Federation (FISU), the 2026 World University Championship Cheerleading will be organized by

- Swedish University Sports Federation
- Swedish Cheerleading Federation
- Gothenburg and CO



go:teborg



GOTHENBURG
2026

FISU
WORLD
UNIVERSITY
CHAMPIONSHIP
CHEERLEADING

Registration

DEADLINES

Remaining Deposit 50% needs to be fully paid to participate the event

Accreditation & Team confirmation 2-4 /6/2026

Note that all participants need to be accredited before the General Technical Meeting .



GOTHENBURG
2026

FISU
WORLD
UNIVERSITY
CHAMPIONSHIP
CHEERLEADING

General program

Tuesday 2.6.2026	Wednesday 3.6.2026	Thursday 4.6.2026	Friday 5.6.2026	Saturday 6.6.2026	Sunday 7.6.2026	Monday 8.6.2026
Arrivals	Arrivals	Arrivals	Quizwalk 9am-10am	Competition day 2 10am-3:30pm	Competition day 3 Finals 9am-2pm	Departures
Accreditation office open 1pm-6pm	Accreditation office open 9am-9pm	Accreditation office open 9am-1pm	Competition day 1 12pm-5pm	Head of Delegation reception 6pm-8:30pm	Award Ceremony 2:15pm-3pm	
	Trainings between 11am – 8pm	Trainings between 9am – 2pm	Game night with Climate call 6pm-7pm	Movie night in the Arena 7pm-9pm	Closing Ceremony 3pm-3:30pm	
		General Technical Meeting 2pm-3pm			Stuntfest 4:30pm-5:30pm	
		Judges meeting 3pm-4pm			Swedish backyard games 7pm-8pm	GOTHENBURG 2026
		Opening Ceremony 7:30pm-8:30pm				FISU WORLD UNIVERSITY CHAMPIONSHIP CHEERLEADING

Competition Rules

Please read and review the information in the Championship rules document - to assist preparations for the 2026 FISU World University Championships Cheerleading (National University Teams).

[FISU World University Championship Cheerleading](#)



GOTHENBURG
2026

FISU
WORLD
UNIVERSITY
CHAMPIONSHIP
CHEERLEADING

Competition Rules (clarifications)

- 6 teams will progress to the final in all competing categories
- Day 1 (Friday, June 5) – scores do not carry over - feedback on the scoresheet
- Day 2 (Saturday, June 6) counts for 40% of the final total score
- Day 3 (Sunday, June 7 – Finals) counts for 60% of the final total score.



GOTHENBURG
2026

FISU
WORLD
UNIVERSITY
CHAMPIONSHIP
CHEERLEADING

Divisions

Division	Team Size	Gender Requirements
Coed (Premier & Elite)	16–20 athletes (+2 reserves)	<i>Mixed Gender</i>
All Female (Premier & Elite)	16–20 athletes (+2 reserves)	<i>Female</i>
Division	Team Size	Gender Requirements
Pom	16–20 athletes (+2 reserves)	<i>Mixed Gender</i>
Hip Hop	16–20 athletes (+2 reserves)	<i>Mixed Gender</i>
Jazz	16–20 athletes (+2 reserves)	Mixed Gender
Division	Team Size	Gender Requirements
Pom Doubles	2 athletes	<i>Mixed Gender</i>
Hip Hop Doubles	2 athletes	<i>Mixed Gender</i>



GOTHENBURG
2026

FISU
WORLD
UNIVERSITY
CHAMPIONSHIP
CHEERLEADING

Participants

All athletes must satisfy the following conditions:

- a) Be a national of the country they represent.
- b) Be at least 18 and no older than 25 years of age on the 31 December of the year of the event.
- c) Athletes participating in FISU sport events must represent the same country as in their respective International Federations events. Changes of sport nationality must follow respective IF rules.

Only the following may participate as athletes in a FISU World University Championship:

- a) Students who are currently officially registered as proceeding towards a degree or diploma at a university or similar institute whose status is recognised by the appropriate national academic authority of their country.
- b) Former students of the institutions who have obtained their academic degree or diploma in the calendar year preceding the event



GOTHENBURG
2026

FISU
WORLD
UNIVERSITY
CHAMPIONSHIP
CHEERLEADING

List of participating countries

Australia

Brasil

Bulgaria

Canada

Chinese Taipei

Colombia

Greece

Hungary

Japan

Malaysia

Mongolia

People's Republic of China

Poland

Slovenia

Sweden

United States of America



GOTHENBURG
2026

FISU
WORLD
UNIVERSITY
CHAMPIONSHIP
CHEERLEADING

Competition Schedule

- Friday
- Saturday
- Sunday



GOTHENBURG
2026

FISU
WORLD
UNIVERSITY
CHAMPIONSHIP
CHEERLEADING

Warmup Venue



The official warmup hall is **Prioritet Serneke Arena B-hall**, located in the same venue where most teams are accommodated on the first floor.

Warmup timeline per team:

4 minutes – Check-In to the competition flow

24 minutes – Open surface warmup

8 or 12 minutes – Cheer with 2 cheer mats 12min or open surface for Performance Cheer 8min

4 or 6 minutes – Full competition surface with music both Performance cheer and Cheer classes
6minutes, 4minutes for doubles.

Notice there is no transition time between the open surface warmup and the 2 cheer mats, but there is a 4 or 8 minutes transition time between the warmup on 2 mats and the full floor.

After the warmup, teams walk 200 meters outdoors to the competition venue. Teams will have 20 minutes transition time for the transition and to prepare before the scheduled competition slot.



GOTHENBURG
2026

FISU
WORLD
UNIVERSITY
CHAMPIONSHIP
CHEERLEADING

Competition Venue



Kviberg Arena will serve as a key venue for the FISU World University Championship 2026.

Kvibergs Arena has a seating capacity of approximately 1,500 spectators. We have a separate athlete seating area during the Championship, on the stands on 1st floor.

Competition Floor

The competition area consists of 9 mats (cheerleading) 16 x 14meters.



The competition area consists of 8 mats (performance cheer)16 x 12 meters. The cheer competition and warmup surface will be a standard foammat surface (no spring floor). The performance cheer competition and warmup surface will be a dancemat.

After the teams have competed, we will have a playback area in the entrance where they can watch their routine before heading to the athlete stands to follow the rest of the competition.

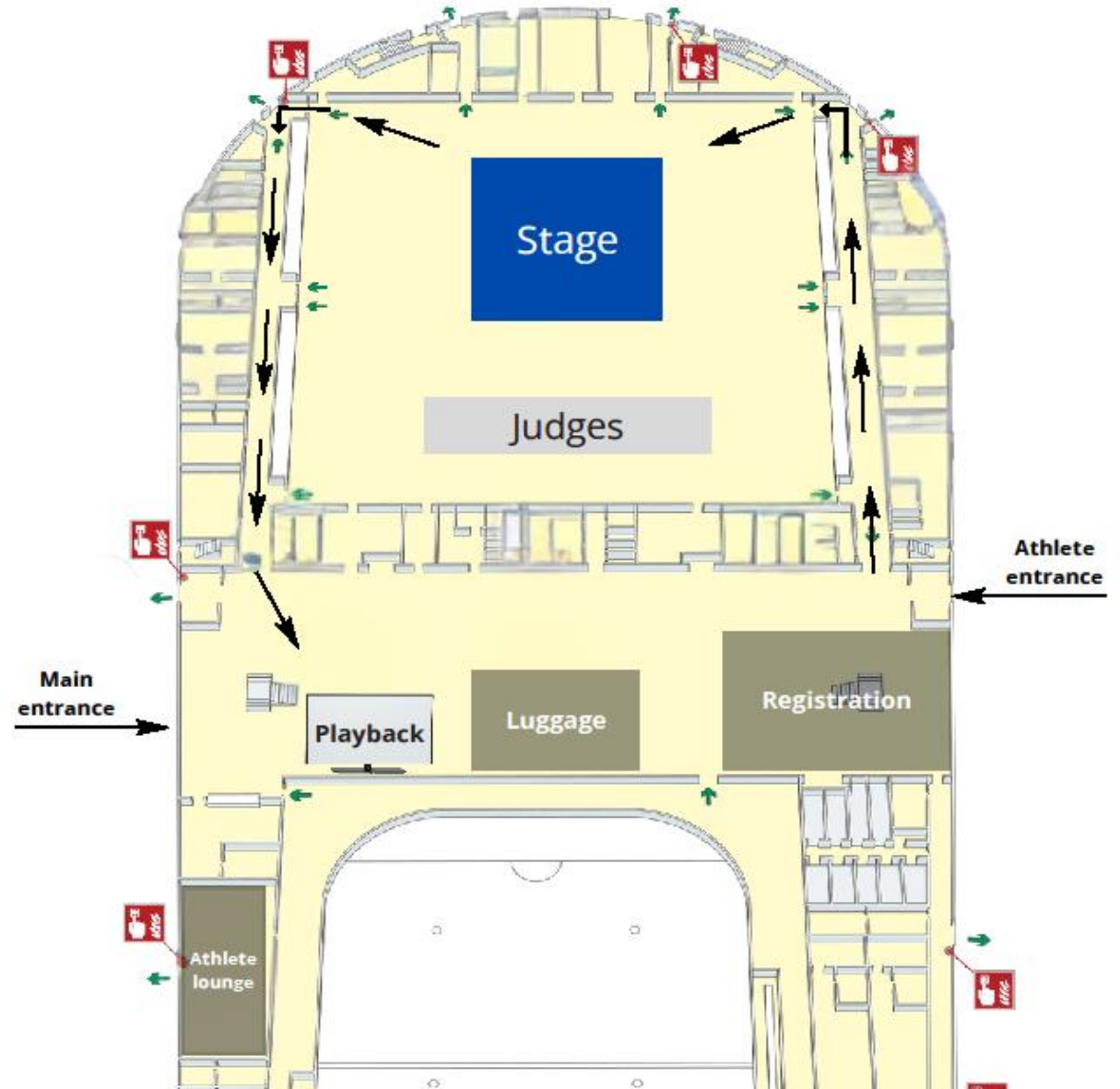


FISU
WORLD
UNIVERSITY
CHAMPIONSHIP
CHEERLEADING

Competition flow

-  Larmknapp/
Fire alarm call point
-  Utrymningsväg/
Exit / Escape route

Entréplan/Entrance floor



Services included in the participation fee

SERVICES

The 80 euros per night participation fee includes accommodation, breakfast, lunch and dinner, transportation from/to official airports/train station, ceremonies. Breakfast will be served at the hotels where delegations are staying. Price for an extra official is 160 euros per night. Lunch and dinner will be served at the Serneke Arena Hotel restaurant Campo.

MEDICAL ASSISTANCE

The Organizing Committee provide First Aid at the competition venue. The OC has also a contact with the local hospital Östra sjukhuset – distance between the competition venue and the hospital is 5 km. We strongly recommend each participating country to take a medical insurance policy.

ANTI-DOPING

The doping control will be provided according to the FISU standards in partnership with the Swedish Anti-doping Agency (Antidoping Sverige). At the competition venue will be a special room dedicated for the anti-doping control.



GOTHENBURG
2026

FISU
WORLD
UNIVERSITY
CHAMPIONSHIP
CHEERLEADING

Catering

At lunch and dinnertime, a buffet meal will be available for all the participants.

As part of our sustainability initiative, no red meat will be served during lunches or dinners at the event. In addition, at least one of the daily meals will be fully vegetarian. We believe these choices are an important step towards reducing our environmental footprint while still offering tasty and nutritious food for all participants.

The Tap water in Sweden is of exceptionally high quality, safe to drink, and widely preferred over bottled water by locals. With sustainability in mind, the OC will not be supplying plastic water bottles. Remember to bring your own water bottle to fill at the various water points during our event.

Each team will be assigned a separate 30 minute timeslot for lunch and dinner for the competition days to make sure we have proper capacity for all the teams in the restaurant.

Regarding the allergens and dietary requirements, informed via the Individual entry form, contact the kitchen personal.

Breakfast	Lunch	Dinner
7.00-10.00	11.30-15.30	17.30-20.30



GOTHENBURG
2026

FISU
WORLD
UNIVERSITY
CHAMPIONSHIP
CHEERLEADING

Menu

Salad is included at each meal

Tuesday 2.6.2026	Wednesday 3.6.2026	Thursday 4.6.2026	Friday 5.6.2026	Saturday 6.6.2026	Sunday 7.6.2026	Monday 8.6.2026
Lunch	Lunch	Lunch	Lunch	Lunch	Lunch	Lunch
	Chickpea stew served with rice	Breaded fish with boiled potatoes, remoulade sauce & peas	Vegetable patties with potato wedges & aioli	Swedish vegetarian meatballs with mashed potatoes, cream sauce & lingonberries	Chicken sausage stroganoff with rice	
Dinner	Dinner	Dinner	Dinner	Dinner	Dinner	Dinner
Cacciatore, chicken stew with smashed potato	Spaghetti with vegetarian minced meat sauce made from soy mince	Chicken schnitzel with roasted potatoes & béarnaise sauce	Oven-baked fish with boiled potatoes & egg sauce	Bouillabaisse (tomato-based fish stew with root vegetables)	Vegetarian lasagna	



GOTHENBURG
2026

FISU
WORLD
UNIVERSITY
CHAMPIONSHIP
CHEERLEADING

Accommodation



Kviberg Park Hotel

Location: Kviberg Park Hotel is located 2 minutes walking distance from Kviberg Arena.

Capacity: Approximately 346 beds available.

Services: Guests will enjoy modern amenities, including free Wi-Fi, breakfast, and Private bathrooms will be provided in each room.

[Cancellation policy](#)



Scandic Backadal

Location: 10 minutes with a car or a bus from the competition Arena. A shuttle bus will be arranged for the participants staying in this accommodation.

Capacity: Approximately 220 beds available

Services: Guests will enjoy modern amenities, including free Wi-Fi, breakfast, pool, gym, sauna and bicycles to borrow.

[Cancellation policy](#)



Kviberg Vandrarhem (Kviberg Hostel)

Location: Kviberg, Gothenburg, 5 minutes walking distance from Kviberg Arena.

Capacity: Approximately 24 beds are available, on top of the Swedish delegation, with both shared and private room options. Room sizes are up to 4 persons in one room.

Services: Free Wi-Fi, breakfast, and access to a communal kitchen for self-catering, gameroom. Plenty of space for activities, such as board games and common areas. Access for laundry.

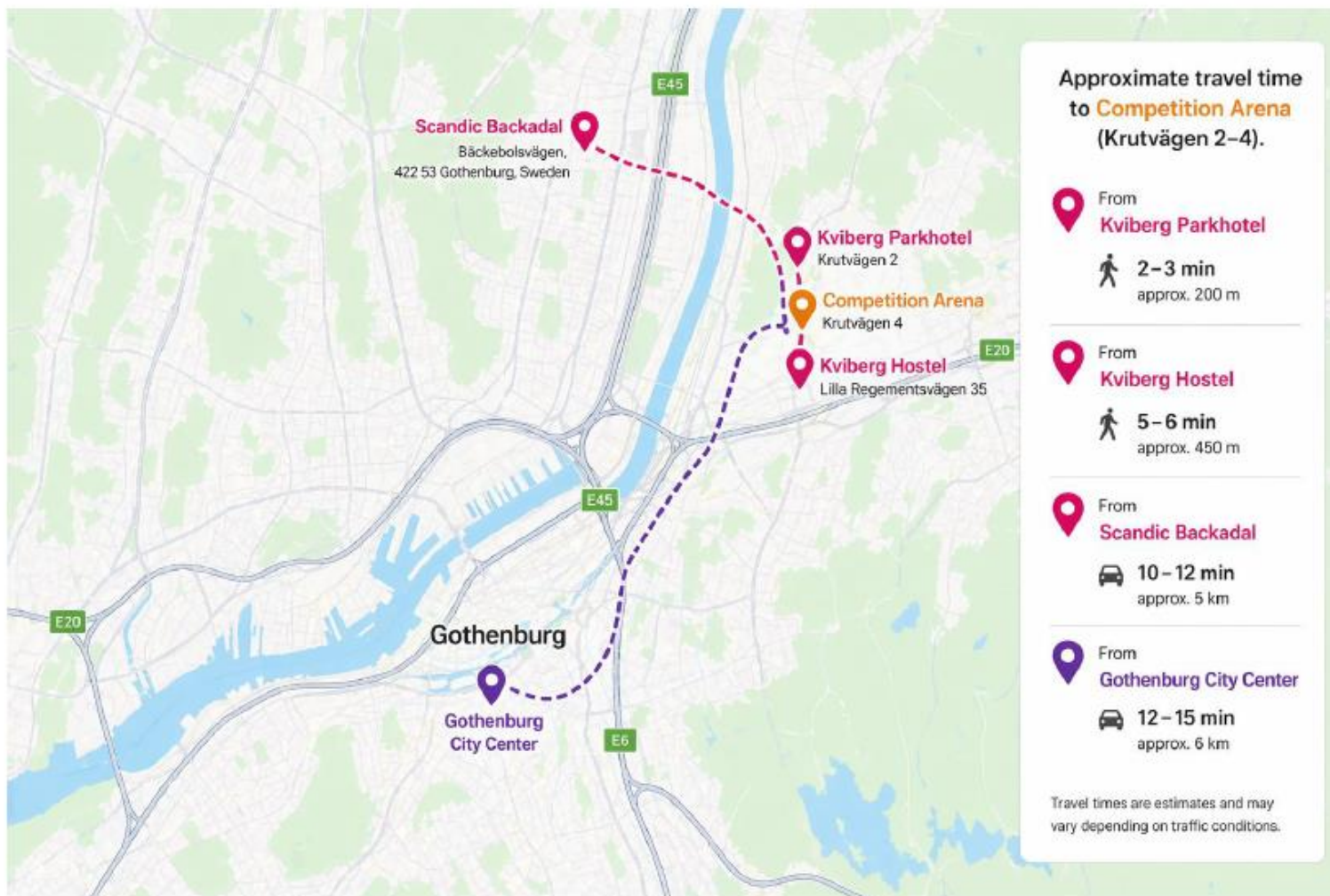
[Cancellation policy](#)



GOTHENBURG
2026

FISU
WORLD
UNIVERSITY
CHAMPIONSHIP
CHEERLEADING

Accommodation



The absolute easiest way to get to the City Center from the Competition Arena is with the local traffic.



Delegations staying at Kviberg Park Hotel



Australia
Brazil
Bulgaria
China
Chinese Taipei
Colombia
Hungary
Japan
Malaysia
Poland
Slovenia
USA



GOTHENBURG
2026

FISU
WORLD
UNIVERSITY
CHAMPIONSHIP
CHEERLEADING

Delegations staying at Scandic Backadal



Canada
Mali
Mongolia



GOTHENBURG
2026

FISU
WORLD
UNIVERSITY
CHAMPIONSHIP
CHEERLEADING

Delegations staying at Kviberg Vandrarhem



Greece
Sweden



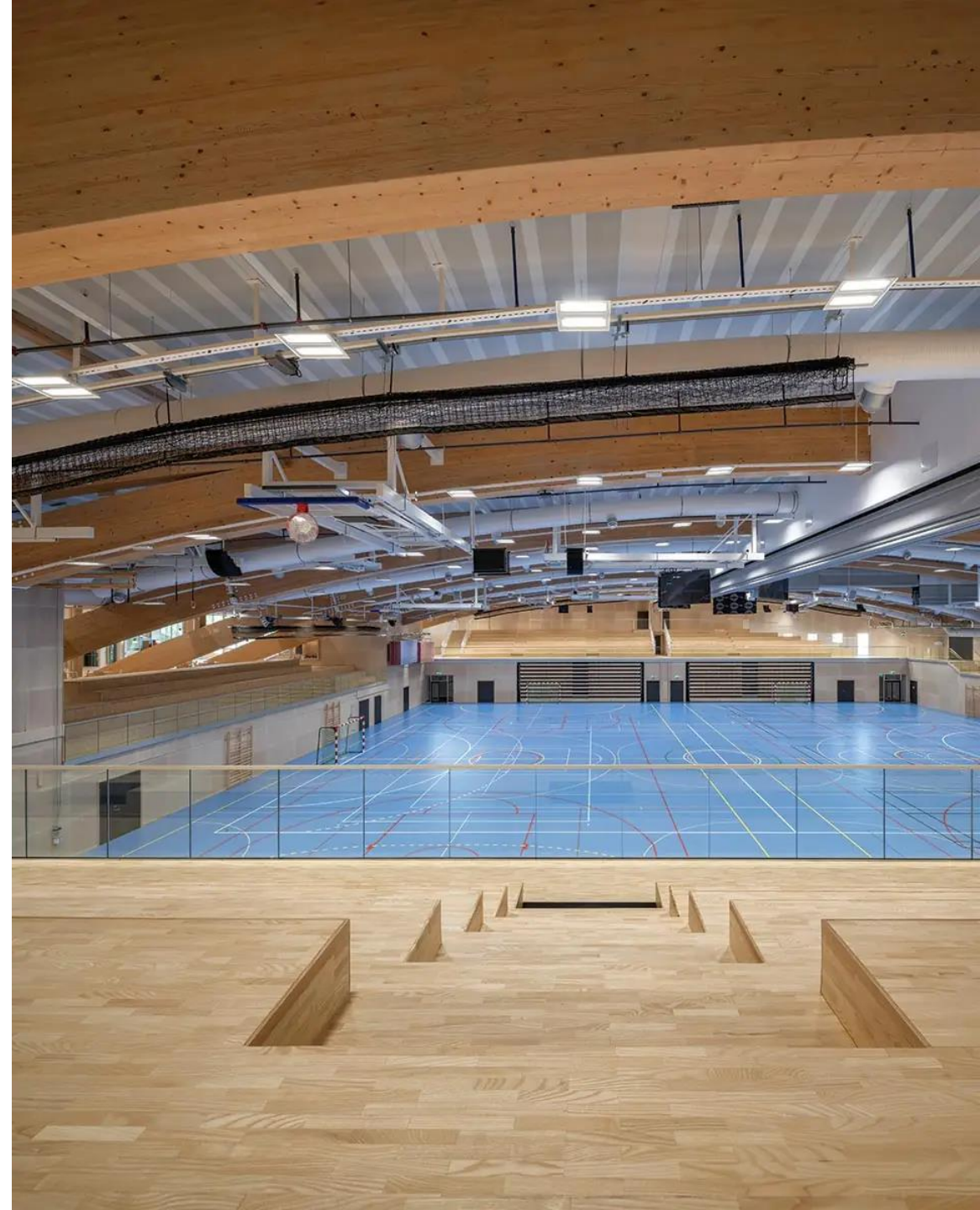
GOTHENBURG
2026

FISU
WORLD
UNIVERSITY
CHAMPIONSHIP
CHEERLEADING

Training schedule

Wednesday 3rd of June

3rd of June		
Kviberg Arena - Competition Venue		
Time	Country	Team
11:00-11:30	Brazil	Coed Elite
11:30-12:00	Australia	All Female Elite
12:00-12:30	Australia	Hip Hop Doubles
12:30-13:00	Australia	Pom Doubles
13:00-13:30	USA	Premier All Female
13:30-14:00	USA	Premier Coed
14:00-14:30	Canada	All Female Elite
14:30-15:00	Brazil	Coed Elite
15:00-15:30	Malaysia	Coed Elite
15:30-16:00	Canada	Coed Premier
16:00-16:30	Japan	Coed Premier
16:30-17:00	Japan	All Female Premier
17:00-17:30	China	Coed Elite, Pom Doubles
17:30-18:00	Columbia	Coed Premier
18:00-18:30	Chinese Taipei	Pom Doubles
18:30-19:00	Slovenia	Pom Doubles
19:00-19:30	Bulgaria	Hip Hop Doubles
19:30-20:00		



Training schedule

Thursday 4th of June

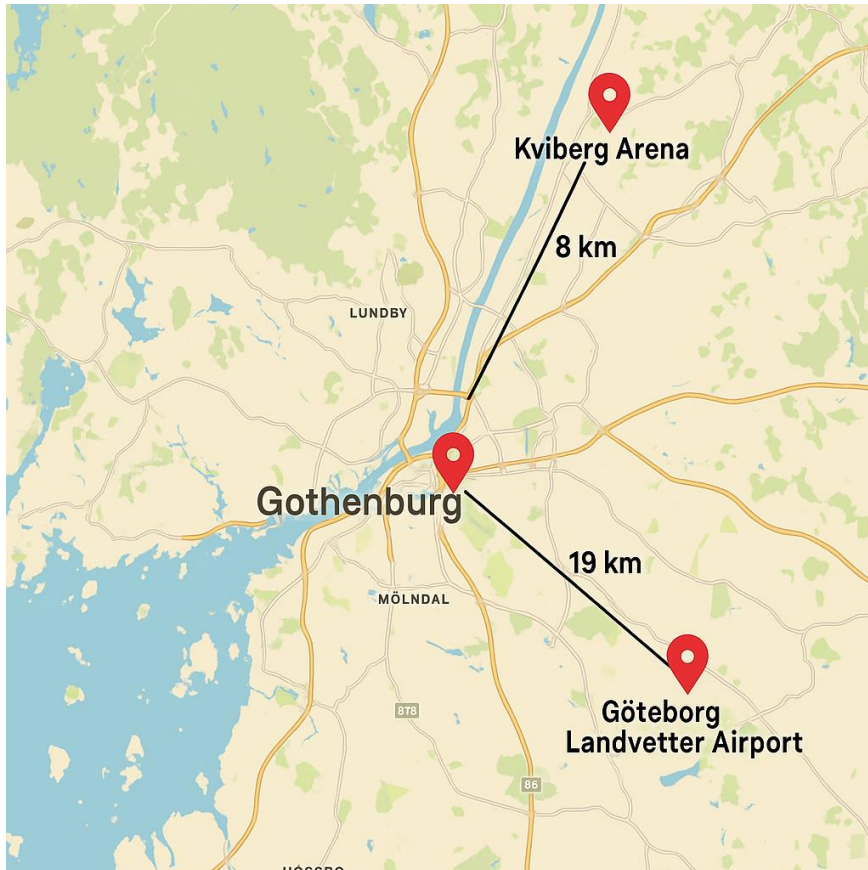
4th of June								
Kviberg Arena - Competition Venue			Kviberg Park Hotel - Competition Warmup Venue					
Time	Country	Team	Time	Country	Team	Time	Country	Team
9:00-9:30	Australia	All Female Elite						
9:30-10:00	Australia	Pom Doubles						
10:00-10:30	Australia	Hip Hop doubles						
10:30-11:00	China	Coed Elite, Pom Double	10:30-11:00	Greece	Pom Doubles			
11:00-11:30	Malaysia	Coed Elite	11:00-11:30	Poland	Pom Team	11:00-11:30	Canada	Coed Premier
11:30-12:00	Brazil	Coed Elite	11:30-12:00	Hungary	Pom Doubles	11:30-12:00	Canada	All-Female Elite
12:00-12:30	Japan	Hiphop Team	12:00-12:30	Slovenia	Pom Doubles	12:00-12:30	Columbia	Coed Premier
12:30-13:00	Japan	Hiphop double	12:30-13:00	Chinese Taipei	Pom Doubles	12:30-13:00	Hungary	Coed Elite
13:00-13:30	Japan	All Female Premier	13:00-13:30	Greece	Jazz Team	13:00-13:30	USA	All Female Premier
13:30-14:00	Japan	Coed Premier	13:30-14:00	Bulgaria	Hip Hop Doubles	13:30-14:00	USA	Coed Premier
			14:00-14:30	Hungary	Hip Hop Doubles	17:00-17:30	Sweden	Coed Elite
			14:30-15:00	Hungary	Hip Hop Team			



GOTHENBURG
2026

FISU
WORLD
UNIVERSITY
CHAMPIONSHIP
CHEERLEADING

Transportation



How to get to Gothenburg

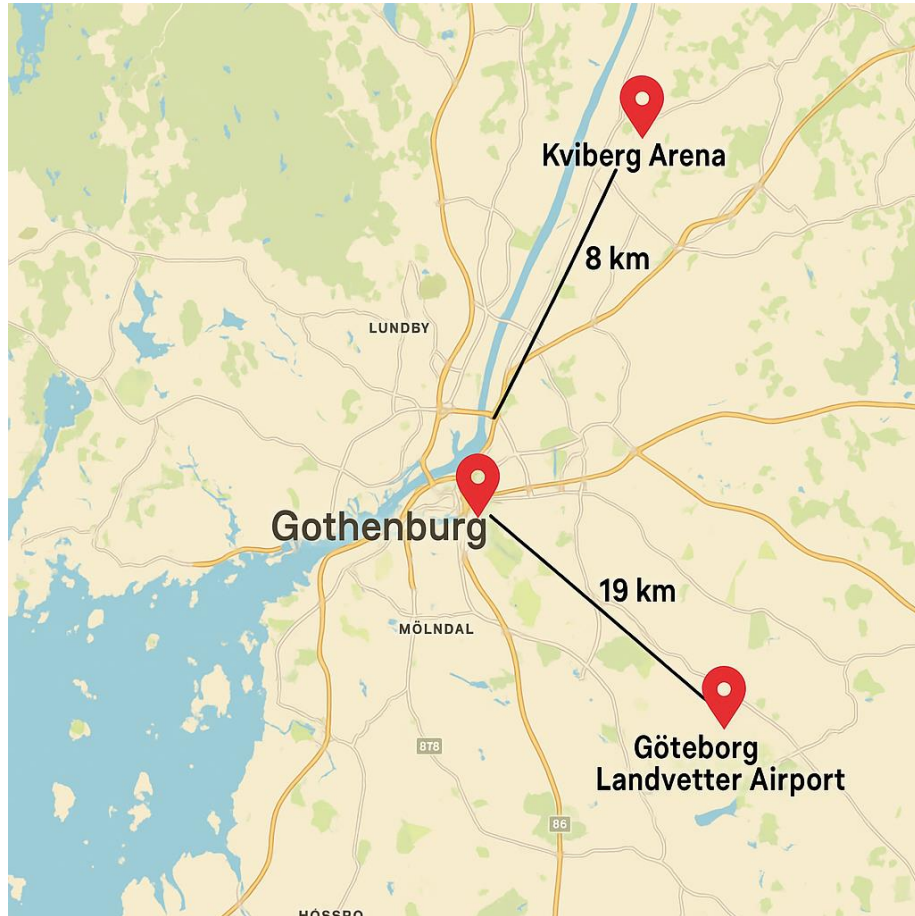
You can get to Gothenburg by car, airplane or train. The official arrival points in Gothenburg are the Landvetter Airport and the Main Station Gothenburg where you will be welcomed by our Volunteers. As soon as you arrive there, your transport and other services are arranged by the Organizing Committee. Travel to and from those arrival points has to be arranged independently.

Transport in Gothenburg

According to the arrival and departure schedule and your respective accommodation we are going to arrange transportation from/to the airport or train station to the accommodation either by a special shuttle-bus or by public transport. The same applies to travelling between the competition venue and accommodation for those who will be staying in Scandic Backadal.



Arrivals



- At the airport: Make sure you have collected all your luggage before exiting the terminal.
- Missing luggage? Any issues must be settled inside the terminal – before you go out.
- Meeting point: Our volunteers will greet you outside the terminal at the Arrivals area, holding a FISU sign.
- Transport & services: Once you meet our volunteers, the Organizing Committee will arrange your transport and further services.
- Depending on your arrival time, you will be taken to:
 - Competition venue → to finalize your competition registration at the Competition Office, or
 - Your hotel → directly for hotel check-in.
- Look for the FISU sign – and welcome!

Visa requirements and travel documents accepted by Sweden

The Schengen member states have jointly agreed on the rules governing the movement of third-country nationals within their territories and determined which countries' citizens require a visa. Additionally, each Schengen state has established its own requirements regarding the travel documents that third-country nationals must present upon entry.

Even if you do not need a visa to visit Sweden, you must carry a **valid passport or another travel document** recognized by Swedish authorities. Your passport must be valid for **at least three months beyond your intended departure date from the Schengen area**.

Furthermore, your passport or travel document must have been issued **within the last ten years**.

For detailed information on visa requirements and accepted travel documents for Sweden, please visit:

[Visiting Sweden - Sweden Abroad](#)

[List of third countries whose nationals must be in possession of visas when entering Sweden - Government.se](#)

Where to Apply for a Visa to Sweden

[Apply for a Schengen visa \(visiting Sweden for up to 90 days\) – Swedish Migration Agency](#)

Please remember to start your visa application procedure in time!



GOTHENBURG
2026

FISU
WORLD
UNIVERSITY
CHAMPIONSHIP
CHEERLEADING

Insurance

The participating countries must have the appropriate insurance to cover travel and participation, as they are not the responsibility of the Organizing Committee nor FISU.

It is recommended by the Swedish migration office that you have individual medical travel insurance that covers the costs that may arise in connection with emergency medical care, urgent hospital treatment, or transport to your country of origin for medical reasons. The insurance should cover costs of at least €30,000 and be valid in all Schengen countries.



GOTHENBURG
2026

FISU
WORLD
UNIVERSITY
CHAMPIONSHIP
CHEERLEADING

Tickets and Livestream

Tickets for all days of competition are available now and can be purchased collected via our ticketing partner Nortic:

[Buy your tickets to 2026 FISU World University Championship Cheerleading](#)

Don't forget to book your tickets in advance so you don't miss out on this exciting competition!

The event will be broadcasted through two operators, for the Swedish audience through Staylive, and for the international audience through FISU TV.



GOTHENBURG
2026

FISU
WORLD
UNIVERSITY
CHAMPIONSHIP
CHEERLEADING

Safeguarding recommendations

We strongly recommend all Delegation Members, Officials & Leaders to participate in our safeguarding efforts.

- The Organizing Committee and Host Federation aim to ensure a safe, welcoming environment for all athletes at the FISU World Championship. We promote the welfare and protection of all participants.
- **A Safeguarding Officer** will be on-site.
- **Reporting:** QR codes will be placed around the arena for immediate, anonymous reporting.
- **If any situation arises – report it immediately to any Safeguarding Officer.**



GOTHENBURG
2026

FISU
WORLD
UNIVERSITY
CHAMPIONSHIP
CHEERLEADING

Safeguarding recommendations

Recommended Safeguarding Actions for Coaches, Support Staff & Entourage

- *To support our safe environment, we strongly encourage you to prepare the following documents (note: no formal checking will take place on-site, but your cooperation is highly valued)*
- **Criminal Background Check**
- **IOC Certificate** – Completion of the "[Safeguarding Athletes from Harassment and Abuse](#)" online course.
- **Coaches' Code of Conduct** – By attending, you agree to adhere to our Host Federation's [Code of Conduct](#).

Technical Support for IOC Course:

If you experience technical difficulties with the IOC training, please contact: support@learningpool.com



GOTHENBURG
2026

FISU
WORLD
UNIVERSITY
CHAMPIONSHIP
CHEERLEADING

Official merch

We're excited to announce that there will be a dedicated stand on the second floor of the arena where you can purchase exclusive championship merchandise!

In addition to the competition merch, several vendors will be present during the event, showcasing a variety of exciting products. Don't miss the chance to grab your favorite items and explore what our vendors have to offer!



Sweatshirt

Sizes: 140, 152, S-XXL
Price: 375 SEK

T-shirt

Sizes: 130/140, XS-XXXL
Price: 200 SEK



FISU
WORLD
UNIVERSITY
CHAMPIONSHIP
CHEERLEADING

Pre order official merch

Price

Sweatshirt: 375 SEK

T-shirt: 200 SEK

Reminder that the pre-order merch must be picked up and paid for on site on Thursday, June 4 or Friday, June 5.

Orders that have not been collected by the end of the competition day on Friday will be put up for sale.



Sweatshirt

Sizes: 140, 152, S-XXL

Price: 375 SEK

T-shirt

Sizes: 130/140, XS-XXXL

Price: 200 SEK



FISU
WORLD
UNIVERSITY
CHAMPIONSHIP
CHEERLEADING

Sustainability policy

Our Approach

We conduct the championship with responsibility for people, the environment, and society – inspiring sustainable choices.

Our Three Core Commitments

 Environmental

 Social

 Economic



GOTHENBURG
2026

FISU
WORLD
UNIVERSITY
CHAMPIONSHIP
CHEERLEADING

Sustainability policy – key highlights

- **Tap water** – always available and encouraged instead of bottled water
- **Vegetarian food options** – offered for all meals
- **No red meat** – served at any event-related catering
- **Sustainable travel endorsed** - public transport, carpool, walk, bike
- **Trained Safeguarding personnel** - present at the event
- **Volunteers – and staff education** - regarding Safeguarding Athletes from Harrassment and Abuse
- **Accessible cheerleading** – reduced tickets for different groups



GOTHENBURG
2026

FISU
WORLD
UNIVERSITY
CHAMPIONSHIP
CHEERLEADING

Cultural exchange

Join us right after the Opening Ceremony for a Cultural Exchange event with a live DJ at the arena. Bring the t-shirts and pins you'd like to swap with participants from all over the world. Get to know your fellow competitors, share a piece of your home country, and take home a souvenir from another. Whether you're a seasoned collector or just curious to meet new friends, this is the perfect way to kick off the championship spirit.

for a Cultural Exchange event with a live DJ at the arena. Bring the t-shirts and pins you'd like to swap with participants from all over the world. Get to know your fellow competitors, share a piece of your home country, and take home a souvenir from another. Whether you're a seasoned collector or just curious to meet new friends, this is the perfect way to kick off the championship spirit. Don't forget your items – and your smile!



GOTHENBURG
2026

FISU
WORLD
UNIVERSITY
CHAMPIONSHIP
CHEERLEADING

Morning Quizwalk

Start your competition day the right way! Join us in front of the Kviberg Park Hotel between 9:00–10:00 for the Quizwalk around the Kviberg arena area. You'll receive instructions on site. A fun and active way to get ready for the day ahead.



GOTHENBURG
2026

FISU
WORLD
UNIVERSITY
CHAMPIONSHIP
CHEERLEADING



Game Night with Climate Call

Our vendor Climate call is arranging a board game night on Friday the 5th of June between 18:00–19:00 at the arena. Come and unwind with fellow participants. Whether you're a boardgame fan, or interested about sustainability, or just in it for the laughs, this is the perfect way to end the first competition day. Bring your game face – and your friends!



GOTHENBURG
2026

FISU
WORLD
UNIVERSITY
CHAMPIONSHIP
CHEERLEADING

Movie night

Movie Night – Saturday 19:00–21:00 at the Competition Venue

After the second competition day, join us all together for a relaxing **Movie Night** at the arena. This is the perfect way to wind down before the final day. Bring your cozy wear and friends!



GOTHENBURG
2026

FISU
WORLD
UNIVERSITY
CHAMPIONSHIP
CHEERLEADING

Stuntfest

Stuntfest – Sunday 16:30–17:30 (outside, weather permitting)

Come and celebrate the end of the championships! Right after the Awarding and Closing Ceremonies, join us for **Stuntfest** – an outdoor free stunting and showcasing of jaw-dropping talent from participants who have travelled from all over the world. Whether you're looking for inspiration, love high-energy performances, or just want to keep the celebration going, this is the perfect way to wrap up an unforgettable event.



GOTHENBURG
2026

FISU
WORLD
UNIVERSITY
CHAMPIONSHIP
CHEERLEADING



Swedish backyard games

Wrap up the championship the Swedish way! Join us for an afternoon of classic backyard games, including the legendary **KUBB** and other Swedish favorites. You'll get to team up in small groups, compete for fun, and experience a beloved part of Swedish outdoor culture.



GOTHENBURG
2026

FISU
WORLD
UNIVERSITY
CHAMPIONSHIP
CHEERLEADING



Play Beach Volleyball at Half Price!

- All participants of the FISU **World University Championship Cheerleading 2026** can book an indoor volley-ball court at **Beach Center** for **half the regular price** during the event!
- Beach volleyball is a popular and fast-growing sport in Sweden, with thousands of players enjoying it on the country's beaches during the summer months, and year-round indoors.
- And did you know? **Sweden won Olympic Gold in Paris 2024 with Hellman / Ahman in men's pairs!** Now it's your turn to try it out!
- **Booking Details**

Friday, June 5th

- 09:00 – 17:00 & 21:00 – 23:00 → 220 SEK per court/hour
- 17:00 – 21:00 → 440 SEK per court/hour

Saturday, June 6th & Sunday, June 7th → 440 SEK per court/hour

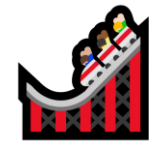
Booking via email only: info@beachcenter.se (no phone or walk-ins)

Mention in your email that you are a FISU World University Championship Cheerleading participant and you will be awarded with a discount.



GOTHENBURG
2026

FISU
WORLD
UNIVERSITY
CHAMPIONSHIP
CHEERLEADING



The thrill of Swedish Summer at Liseberg

Take the opportunity to enjoy a whole day of summer fun at Liseberg amusement park. As a FISU World University Championship Cheerleading participant, you get a 30% discount on admission and a ride pass for all the park's attractions. If you'd rather take it easy, try your luck at the wheels of fortune, and maybe grab something tasty to eat, you can choose admission only. The booking will happen through [Liseberg official homepage](#).

The discount code will be **FISU26**

The code is valid for following date 3-7 juni

Buy your tickets: [Parkbiljetter & priser | Liseberg](#)



GOTHENBURG
2026

FISU
WORLD
UNIVERSITY
CHAMPIONSHIP
CHEERLEADING

Communication under event



During the event, we will communicate with participants via an official WhatsApp community. You can join the group by clicking the link [here](#) or by scanning the QR code. We recommend that each team has at least one coach join the group.

FISU WUC 2026 information
WhatsApp group



FISU
WORLD
UNIVERSITY
CHAMPIONSHIP
CHEERLEADING

Communication under event: Head of Delegations

During the event, we will communicate with all Heads of Delegations via an official WhatsApp community. You can join the group by clicking the link [here](#) or by scanning the QR code. We hope all Head of Delegations can join the group before for the event.



FISU WUC Cheerleading 2026
Heads of Delegations
WhatsApp group



FISU
WORLD
UNIVERSITY
CHAMPIONSHIP
CHEERLEADING

Contact information



<https://cheerleading2026.fisu.net/>



wuc2026@cheerleading.se



@ Fisu.cheerleading



2026 FISU World University Championship Cheerleading



GOTHENBURG
2026

FISU
WORLD
UNIVERSITY
CHAMPIONSHIP
CHEERLEADING