



FISU  
WORLD  
UNIVERSITY  
CHAMPIONSHIP  
CYCLING

# 2026 FISU World University Championship Cycling - Bulletin 2

26th April 2026



中国学生体育联合会  
Federation of Chinese  
University and  
School Sports  
**FOCUSS**



北京大学  
PEKING UNIVERSITY

# Table of Contents

01

**Welcome Message**

02

**Host City**

03

**Event Overview**

04

**Event Program (Updated)**

05

**Transportation  
(Updated)**

06

**Accommodation  
(Updated)**

07

**Catering Arrangement**

08

**Competition (Updated)**

09

**Medical Service &  
Doping Control (Updated)**

10

**Participation  
Requirement**

11

**Financial Condition  
(Updated)**

12

**Entry and Visa**

13

**Key Meetings &  
Services**

14

**Official Protocol  
(Updated)**

15

**Cultural Activities (New)**

16

**Contact Information &  
Official Websites**

# 1. Welcome Message

To: The Member Associations of the International University Sports Federation (FISU)

Dear student-athletes, dear friends,

I am delighted to welcome you to Chongli for the 2026 FISU World University Championship Cycling.

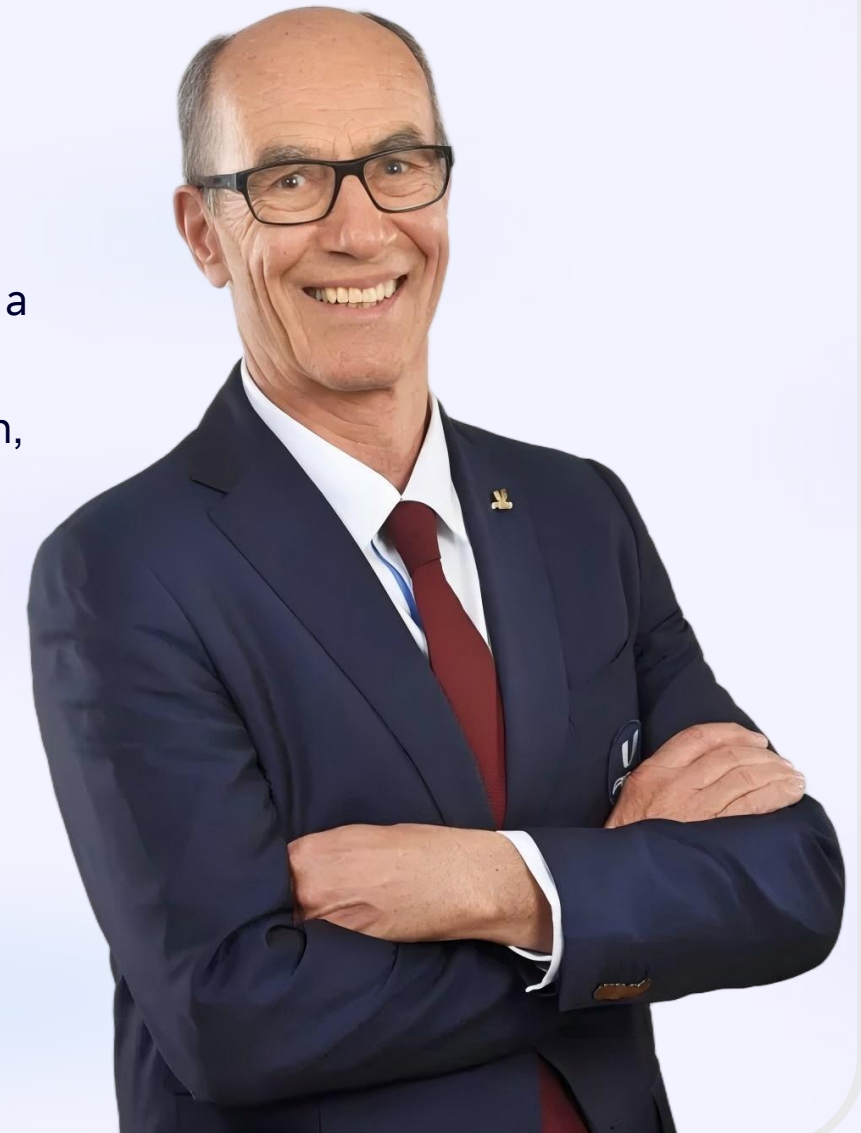
I would like to address you first, the student-athletes, who are and will always be the beating heart of FISU. Competing on these Olympic-legacy roads and mountain trails will be a highlight of your university sports journey. You arrive from different backgrounds as competitors, but you share a common passion for your sport, a commitment to fair play, and a respect for one another. You will undoubtedly leave as friends.

This championship demands skill, endurance, and determination. But beyond the competition, I urge you to embrace the experience and create memories that will last a lifetime.

None of our events would be possible without our wonderful hosts. I extend our sincere gratitude to the China Student Sports Federation (CSSF), the City of Chongli, the Organizing Committee, and all the passionate volunteers. We are also grateful for the support of the Union Cycliste Internationale (UCI), ensuring the highest technical standards for this championship.

I am confident this event will give you every opportunity to shine. I wish you the very best of luck.

Leonz Eder  
FISU President



## 2. Host City

Chongli, one of the host cities of 2022 Winter Olympic, is located in the northwest of Hebei Province, China. Chongli District has rich natural resources and located at 41° north latitude, with an average altitude of about 1,200 meters. About 80%

of the territory is mountainous terrain, with a vegetation coverage rate of approximately 75%. The air contains over 10,000 negative oxygen ions per cubic centimeter.

The average temperature in summer is about 18.4°C, and about -12°C in winter. The snow retention period lasts for more than 150 days. It is hailed as the Davos of the East!



# 3. Event Overview

## Event Title

2026 FISU World University  
Championship Cycling

## Dates

June 25 - June 29, 2026

## Host City

Chongli, Zhangjiakou, China

## Governing Body

FISU

## Organizer

- Chongli District Government
- China Student Sports Federation (CSSF)

## Executive Units

- Cycling Branch of CSSF
- Forlong Group
- Peking University

# 4. Event Program (Updated)

DATE	Morning Session	Afternoon Session
Jun 22	Arrival & Registration	
Jun 23	Official Training & Registration	
Jun 24	Official Training / Organizing committee Meeting/Rider Confirmation/Team Managers' Meeting & Opening Ceremony (evening)	
Jun 25 (DAY 1)	Time Trial (M/F)	Demonstration: Mixed Team Relay Time Trial (3M & 3F)
	Free Training	Free Training
Jun 26 (DAY 2)	Criterium Race (M/F)	
	Free training	
Jun 27 (DAY 3)	Road Race (M/F)	
	Free training	
Jun 28 (DAY 4)	Cross-country Eliminator (M/F)	Demonstration: MTB Mixed Team Relay (3M & 3F)
	Free training	
Jun 29 (DAY 5)	Mountain Cross-country Olympic (M/F)	Demonstration: ROAD BIKE RACE IN ATHLETICS FIELD: Male Team Sprint (3M) & Female Team Sprint(3F) & Mixed Team Relay (3M&3F)
Jun 30	Departure Day/Cultural Activity	

# 4. Event Program (Updated)

## Bonus Distribution Rules for Demonstration Sub-Disciplines

**Total Prize Pool: 100,000 RMB**

**(20,000 RMB per Demonstration Event, 5 events total)**

### Distribution per discipline (¥20,000 RMB per event)

- 1st Place: worth ¥10,000 RMB
- 2nd Place: worth ¥6,000 RMB
- 3rd Place: worth ¥4,000 RMB

### Eligibility

- Prizes are awarded to the top 3 teams/individuals in each Demonstration Event as per official competition results.
  
- Prizes will be awarded either in RMB or in kind of equivalent market value, at the sole discretion of the organizing committee.

### Demonstration disciplines Covered:

- MTB Mixed Team Relay (3M & 3F)
- Mixed Team Relay Time Trial (3M & 3F)
- Road Bike Race in Athletics Field: Male Team Sprint (4M)
- Road Bike Race in Athletics Field: Female Team Sprint (3F)
- Road Bike Race in Athletics Field: Mixed Team Relay (3M & 3F)

**Note:** Prize distribution will be coordinated by the Organizing Committee (OC) within 14 working days after the event conclusion.

## 5. Transportation (Updated)

### Entry Point (Updated):

Our official point of entry is Beijing Capital International Airport (PEK) and Beijing Daxing International Airport (PKX). The OC will provide Round-the-clock Airport Pick-up and Transfer Services.

### Arrival & Departure (Updated):

It is about 2.75 hours driving with the distance of 216 km to take the shuttle bus from Beijing Capital International Airport to the Venue By Shuttle Bus, and 3.5 hours driving with the distance of 269 kilometers from Beijing Daxing International Airport to the Venue. The OC delegation Escort Volunteers will meet all the delegations at the EXIT after they claim the luggage and guarantees the transportation within half an hour.

### Logistic (Updated):

The OC adopts more flexible transportation method, based on the size of each delegation to transport all the passengers and BIKES together or separated. **Delegations with 5 members or fewer, the passengers and their bikes will be transported together by vans, while the delegations with total members larger than 5, the passengers and the bikes will be transported separately by shuttle buses and trucks.** If in that case, bikes will be Transported to the VENUE either simultaneously or earlier than the passengers.



Mascot: Chong Chong



## 6. Accommodation (Updated)

### Residence of Luxury & Serenity for FISU Family & Technical Officials

To honor our FISU Family and Technical Officials, we have selected the premium Forlong Hotels & Resorts as your exclusive accommodation. This is more than a hotel; it is a serene sanctuary blending natural beauty with modern luxury.



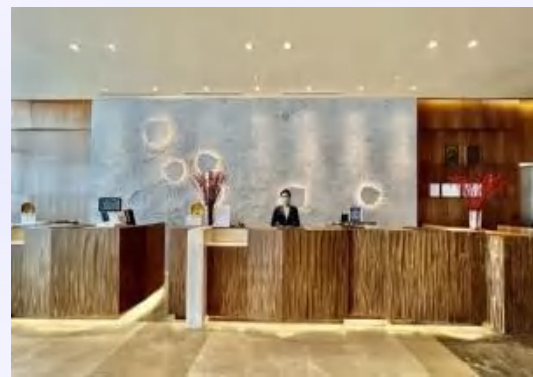
# 6. Accommodation (Updated)

## A Vibrant Lakeside Community for Delegations

We understand that rest and recovery are vital for peak performance. The Forlong Fanwood Hotel, a vibrant lakeside complex, has been chosen for all athletes and delegations. It's a lively, convenient, and comfortable hub.

## Room Selection System

Once the Organizing Committee confirms receipt of your deposit, your delegation will be able to select hotel rooms in the Delegations ' Village. Please visit the Room Selection System link: [Hotel Room Selection \(https://wucc2026.com/h/\)](https://wucc2026.com/h/)



# 7. Catering Arrangement

Forlong Hotels & Resorts Banquet Hall / Valley All-Day Dining Hall: A refined dining experience for the FISU Family and Technical Officials.

Huayuejian Dining Hall: A relaxed and spacious primary dining area for all delegations.

All restaurants will take into account the differences in religious beliefs and provide international catering services for each participating delegation.




## 8. Competition (Updated): Warm-up and indoor Training

DOWNHILL SIMULATION

### 支持下坡模拟

插电下坡模拟，把山间“滑”感搬回家—  
不用蹬脚也能追上风的速度



\*此功能仅限插电使用

THINK BIDEB

### XX PRO-新款 智能直驱式骑行台

功率精度±1% | 自发电 | 顺丰包邮



GT-03 蓝色款



静音设计 重量轻巧 快速拆卸 多车适用

When delegations check in, athletes will be assigned some smart bike trainers and traditional rollers for their own use to do warm up or indoor training.

Athletes can also find these stationary bike trainers and traditional rollers placed at their hotel building on the 1st floor, to assist athletes with warm-ups or cycling training.

## 8. Competition **(Updated)**: Warm-up and indoor Training



If athletes from various countries prefer a more dynamic training atmosphere, they can visit the Athletes' Salon, where more cycling trainers and a larger space are available for indoor training or interaction.

# 8. Competition (Updated): Criterium



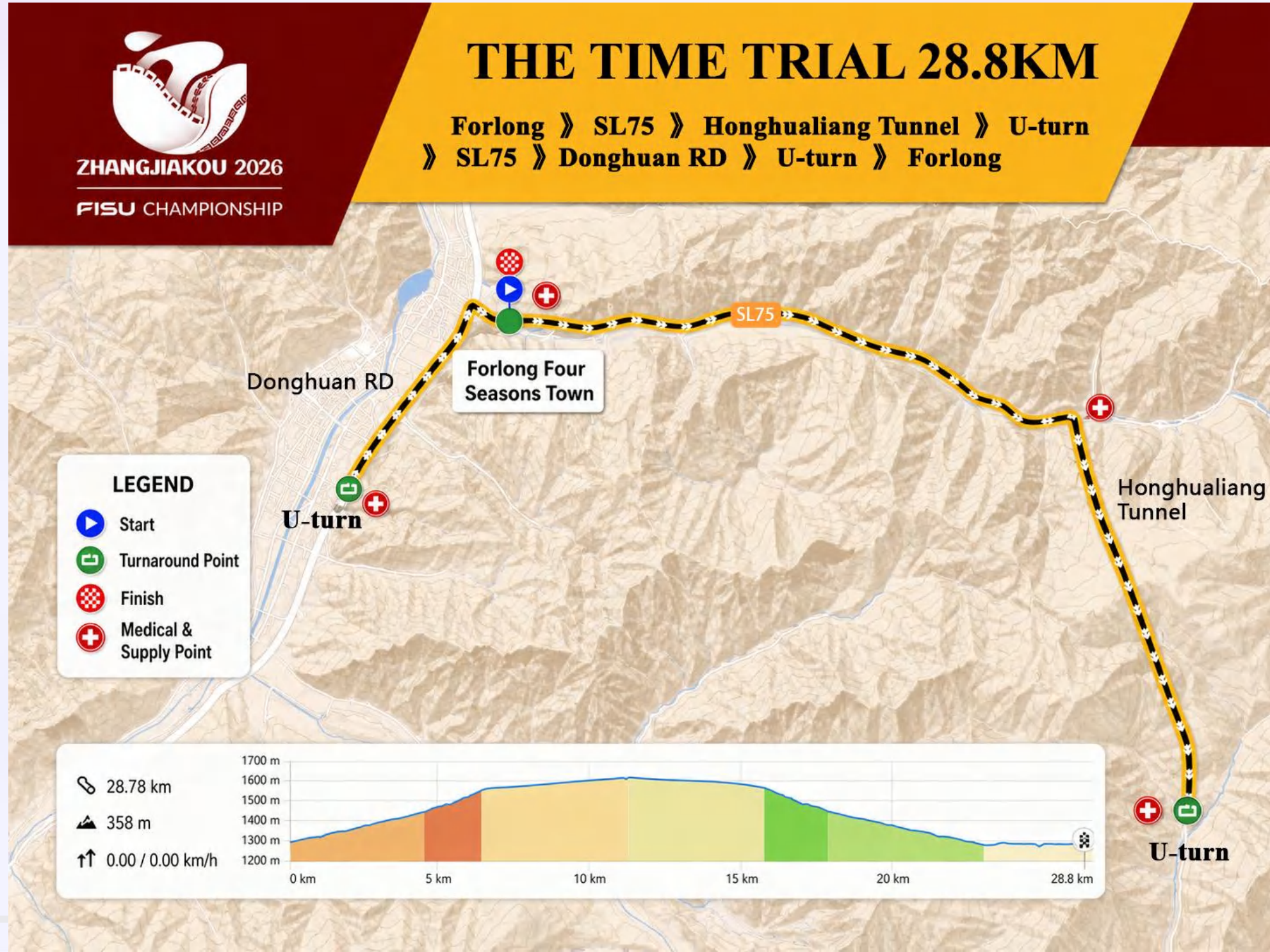
# 8. Competition (Updated): Time Trial



ZHANGJIAKOU 2026  
FISU CHAMPIONSHIP

## THE TIME TRIAL 28.8KM

Forlong » SL75 » Honghualiang Tunnel » U-turn  
» SL75 » Donghuan RD » U-turn » Forlong



# 8. Competition (Updated): Road Race

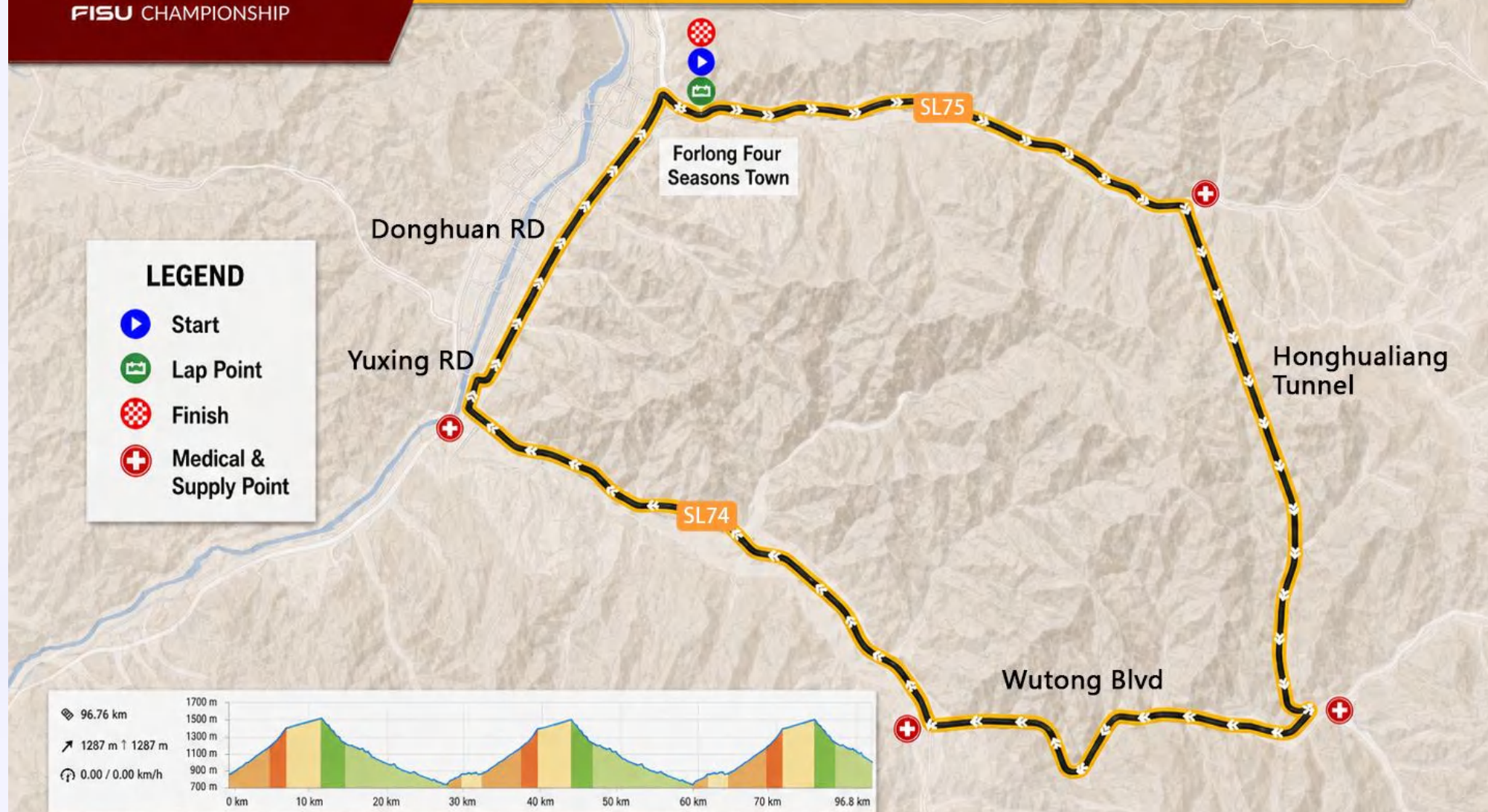


ZHANGJIAKOU 2026

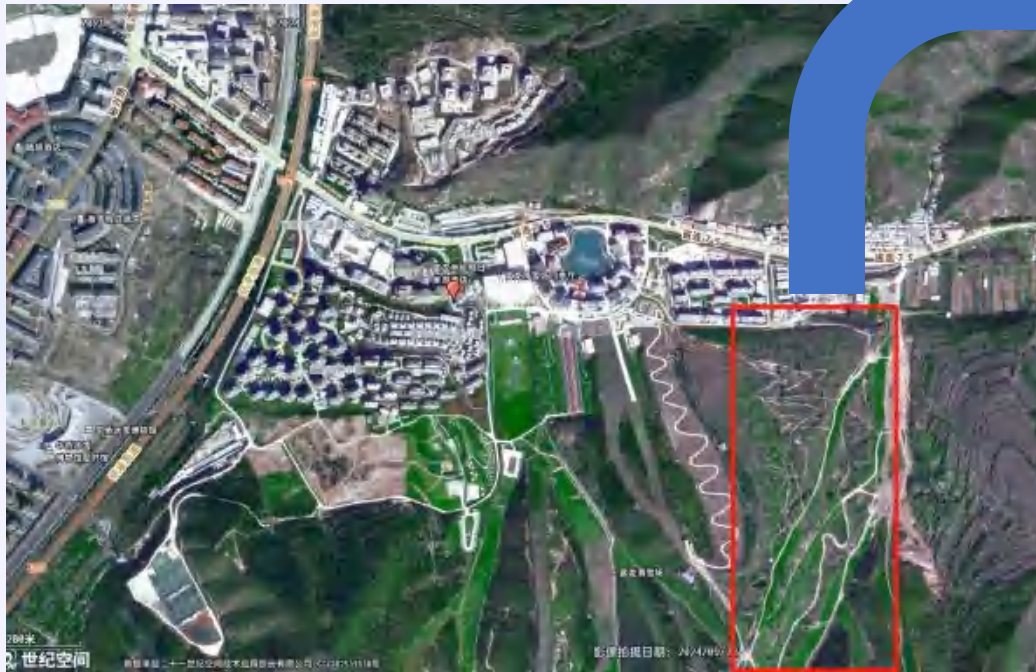
FISU CHAMPIONSHIP

## THE ROAD RACE 96.8KM

Forlong » SL75 » Honghualiang Tunnel » Wutong Blvd »  
SL74 » Yuxing RD » Donghuan RD » Forlong 3Laps



## 8. Competition (to be updated): Mountain Bike



( Under Construction )



# 8. Competition : ROAD BIKE RACE IN ATHLETICS FIELD



## 9. Medical Service & Doping Control (Updated)

First-aid will be provided by the OC, but each participant needs to have their own health insurance, in case any further medical assistance is needed.

Anti doping control will take place in a WADA-accredited laboratory.



# 10. Participation Requirement



## Eligibility

### 1. Age

Born between January 1, 2001,  
and December 31, 2008.

### 2. Academic Status & Nationality

As per FISU regulations

## How to registrate?

Only through your NUSF:  
<https://gms-fisu.net>

<https://www.fisu.net/federation-internationale-du-sport-universitaire/member-associations-nusf/>

# 10. Participation Requirement

## Registration Deadlines

- 1 General Entry  
Before December 25, 2025
- 2 Quantitative Entry  
Before May 10, 2026
- 3 Individual Entry  
Before May 25, 2026

Maximum participants entry :

Road events: 7 men & 7 women

Mountain bike events: 7 men and 7 women

Track and field events: 6 men and 6 women



# 11. Financial Condition (Updated)

80€

Participation Fee

Per person, per night, covering all OC services, including accommodation, meals and transportation

160€

Extra Officials Fee

Per person, per night.

20€/40€

FISU Registration Fee

20 € (FISU Members) per participant  
40 € (Non-FISU Members) per participant

**Payment Note 1:** About the registration fee, no onsite payment will be accepted for this fee. All members need to do is to have the HoD sign the confirmation of the delegation numbers. FISU will issue an invoice to the NUSFs at the end of the season.

**Payment Note 2:** The participating delegations must have the appropriate insurance to cover travel and participation, as they are not the responsibility of the Organizing Committee nor FISU.

# 12. Entry and Visa

## **Policy of entry permits and Visas**

Except for those eligible for visa exemptions, foreigners participating in the 2026 FISU World University Championship Cycling in Zhangjiakou shall apply for a Chinese visa in advance from the Chinese embassies, consulates, and other institutions stationed abroad entrusted by the Ministry of Foreign Affairs of the People's Republic of China.

## **Visa-exempt Countries**

Citizens of certain countries do not require a visa to enter China for a short stay. The full list is available on the official government website or through your local embassy.

# 12. Entry and Visa

## Visa application

All participating teams requiring a visa to enter China must provide, by registering in the FISU Global Management System (GMS), all the team members' necessary personal details and scanned copies of passports. The deadline for the Individual Forms registration is 25 May, 2026. Once this information is received, the OC will begin issuing the official invitation letters required for the visa application process.

For any delegations which need an Invitation Letter, please contact OC email.

For detailed information on the visa process, please visit the official website of the **Chinese Visa Application Service Centre**: <https://www.visaforchina.cn/globe/> or consult the website of the Chinese embassy or consulate in your country.

# 13. Key Meetings & Services

## Accreditation & Media Center

Located on the 2nd floor of the Four Seasons Hall for one-stop services.



## General Technical Meeting (GTM)

On June 24, at the Conference Hall, Forlong Hotels & Resorts.



# 14. Official Protocol (Updated)

## Opening Ceremony

- Speeches by officials
- Event Introduction
- Performance

## Closing Ceremony

- Grassland Beer Festival
- Performances

## Awarding Ceremony

- Medal
- Cosmot Souvenir

## HoD Reception

- Delegation officials' dinner party (mountain summit)

## 14. Official Protocol (Updated)



Lanshan Restaurant, located on the mountainside of the Forlong Ski Resort, will serve as the official venue for the Organizing Committee to host dinner banquets for head of delegation from various countries.

# 15. Cultural Activities during Event(new)

## KTV:

- A free ticket for happy hour
- open for appointment

## Chinese Traditional Culture Workshop:

- calligraphy
- lacquer fan
- filigree enamel

## Visiting areas around the competition venue:

- Chongli Ice and Snow Museum



## One day Tour in Beijing:

- Capital Museum or National
- The Palace Museum
- Peking University



# KTV Open



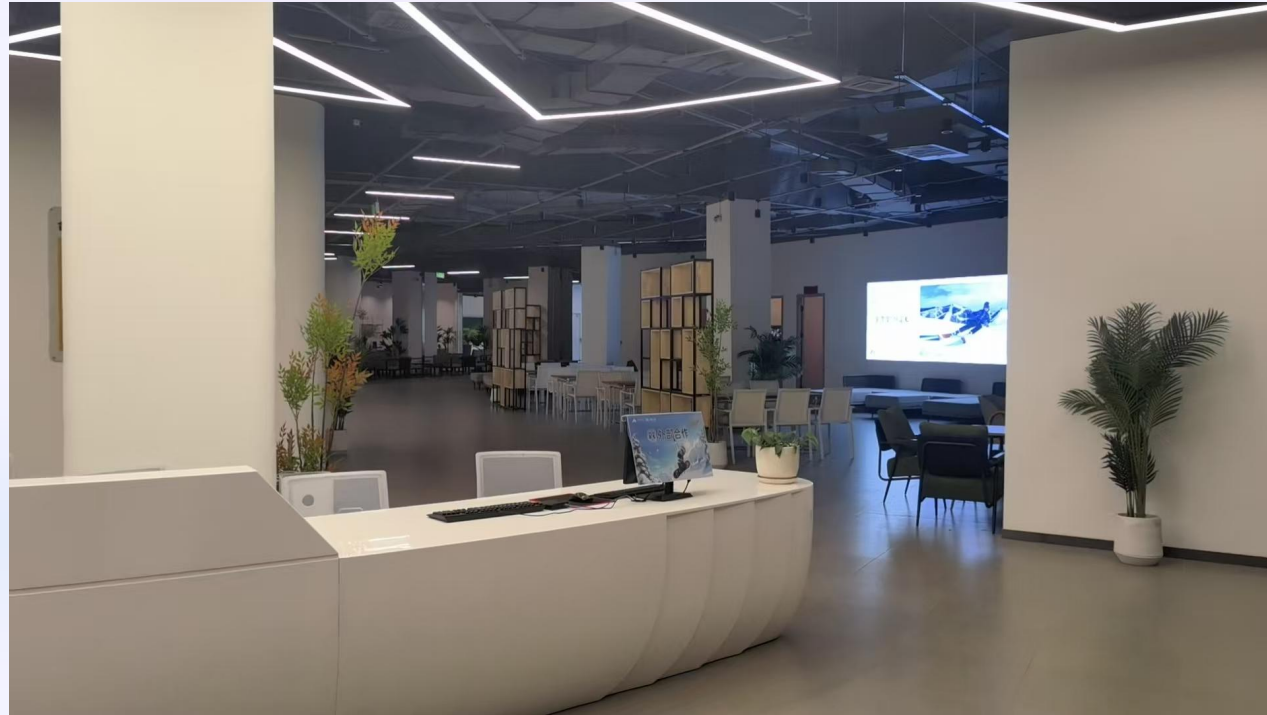
Each delegation member will receive a complimentary ticket upon registration, which can be used during the competition days. For other times when it is needed, an additional fee will be required.

# Chongli Ice and Snow Museum



Every athlete has the opportunity to visit the Chongli Ice and Snow Museum and winter Olympics Museum to experience the ice and snow culture of Chongli.

# Chinese Traditional Culture Workshop



This will be the future Athlete Salon, used for various cultural activities and exchanges. Calligraphy and other activities can all be represented through a picture.

# Chinese Traditional Culture Workshop

In order to enable everyone to have a better understanding of Chinese culture, during the event there will be a Chinese traditional culture workshop. There will be dedicated volunteers teaching calligraphy, lacquer fans and filigree enamel. Products made by the visitors themselves can be taken away as souvenirs.



**Calligraphy**



**Lacquer Fan**



**Filigree Enamel**

# One Day Tour in Beijing



Capital Museum



National Museum



Peking University

On the "departure day", if the delegation can stay for an extra day, they will have the opportunity to take a one-day tour of Beijing. The main attractions visit at present are Peking University, the National Museum, the Palace Museum, Capital Museum. The subsequent schedule will be adjusted according to the actual situation.

Please fill the questionnaire to show your willingness:

<https://v.wjx.cn/vm/OLYZD8L.aspx#>



The Palace Museum



## 16. Contact Information & Official Websites

### Contact Person

Aron Xiao

**OC Email:** [oc@wucc2026.com](mailto:oc@wucc2026.com)

**Whats APP:**



### Official Websites

[cycling2026.fisu.net](http://cycling2026.fisu.net)

### Other Social Media

<https://www.instagram.com/fisu.cycling>

<https://www.facebook.com/FISUCycling>